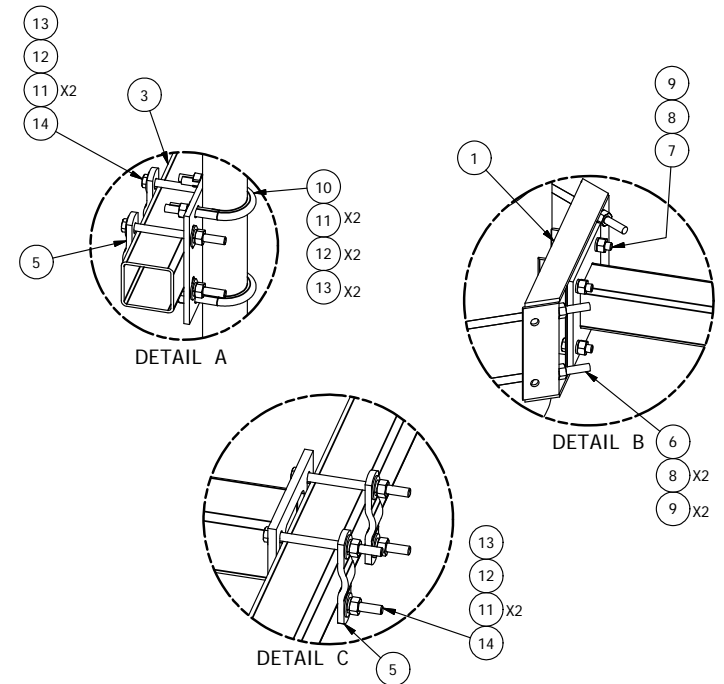


PARTS LIST						
ITEM	QTY	PART NO.	PART DESCRIPTION	LENGTH	UNIT WT.	NET WT.
1	3	X-UGLM	MINI RING MOUNT WELDMENT		21.67	65.00
2	3	X-WWM02	2' STAND-OFF ARM / WALL MOUNT		30.70	92.11
3	3	SQ360	3 1/2" X 60" SQUARE TUBE	60 in	43.23	129.70
4	6	SCX4	CROSSOVER PLATE	8 1/2 in	6.02	36.13
5	18	X-100064	CLAMP (4" V-CLAMP) GALVANIZED		0.91	16.43
6	6	G58R-14	5/8" x 14" THREADED ROD (HDG.)		0.40	2.39
6	6	G58R-24	5/8" x 24" THREADED ROD (HDG.)	24 in	0.40	2.39
7	12	G5802	5/8" x 2" HDG HEX BOLT GR5		0.27	3.24
8	24	G58LW	5/8" HDG LOCKWASHER		0.03	0.63
9	24	G58NUT	5/8" HDG HEAVY 2H HEX NUT		0.13	3.12
10	12	X-UB1212	1/2" X 2-1/2" X 4-1/2" X 2" U-BOLT (HDG.)		0.63	7.50
10	12	X-UB1300	1/2" X 3" X 5" X 2" U-BOLT (HDG.)		0.70	8.36
11	96	G12FW	1/2" HDG USS FLATWASHER	3/32 in	0.03	3.27
12	60	G12LW	1/2" HDG LOCKWASHER	1/8 in	0.01	0.83
13	60	G12NUT	1/2" HDG HEAVY 2H HEX NUT		0.07	4.30
14	36	G12065	1/2" x 6-1/2" HDG HEX BOLT GR5 FULL THREAD	6 1/2 in	0.41	14.74
					TOTAL WT. #	405.22

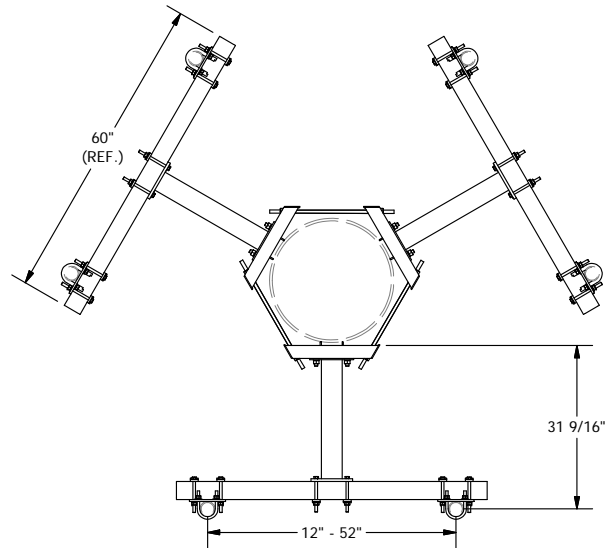


TOLERANCE NOTES
 TOLERANCES ON DIMENSIONS, UNLESS OTHERWISE NOTED ARE:
 SAWED, SHEARED AND GAS CUT EDGES ($\pm 0.030"$)
 DRILLED AND GAS CUT HOLES ($\pm 0.030"$) - NO CONING OF HOLES
 LASER CUT EDGES AND HOLES ($\pm 0.010"$) - NO CONING OF HOLES
 BENDS ARE $\pm 1/2$ DEGREE
 ALL OTHER MACHINING ($\pm 0.030"$)
 ALL OTHER ASSEMBLY ($\pm 0.060"$)

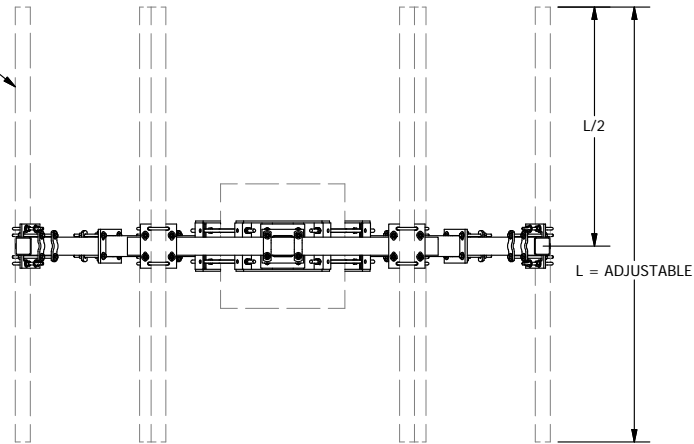
PROPRIETARY NOTE:
 THE DATA AND TECHNIQUES CONTAINED IN THIS DRAWING ARE PROPRIETARY INFORMATION OF VALMONT INDUSTRIES AND CONSIDERED A TRADE SECRET. ANY USE OR DISCLOSURE WITHOUT THE CONSENT OF VALMONT INDUSTRIES IS STRICTLY PROHIBITED.

DESCRIPTION DUAL ANTENNA POLE MOUNT ASSEMBLY 32" STANDOFF 10-34" TO 28" MONOPOLE DIAMETER			
CPD NO.	DRAWN BY	ENG. APPROVAL	
	CEK 4/27/2017		
CLASS	SUB	DRAWING USAGE	CHECKED BY
81	01	CUSTOMER	BMC 5/12/2017

 A valmont COMPANY	Locations: New York, NY Atlanta, GA Los Angeles, CA Plymouth, IN Salem, OR Dallas, TX
	Engineering Support Team: 1-888-753-7446
PART NO.	UDS-SQNPL
DWG. NO.	UDS-SQNPL



2-3/8" TO 2-7/8" O.D.
ANTENNA PIPE
(ORDER SEPARATELY)



TOLERANCE NOTES

**TOLERANCES ON DIMENSIONS, UNLESS OTHERWISE NOTED ARE:
SAWED, SHEARED AND GAS CUT EDGES ($\pm 0.030"$)
DRILLED AND GAS CUT HOLES ($\pm 0.030"$) - NO CONING OF HOLES
LASER CUT EDGES AND HOLES ($\pm 0.010"$) - NO CONING OF HOLES
BENDS ARE $\pm 1/2$ DEGREE
ALL OTHER MACHINING ($\pm 0.030"$)
ALL OTHER ASSEMBLY ($\pm 0.060"$)**

**PROPRIETARY NOTE:
THE DATA AND TECHNIQUES CONTAINED IN THIS DRAWING ARE PROPRIETARY INFORMATION OF VALMONT INDUSTRIES AND CONSIDERED A TRADE SECRET. ANY USE OR DISCLOSURE WITHOUT THE CONSENT OF VALMONT INDUSTRIES IS STRICTLY PROHIBITED.**

DESCRIPTION

**DUAL ANTENNA POLE MOUNT ASSEMBLY
32" STANDOFF
10-34" TO 28" MONOPOLE DIAMETER**

CPD NO.	DRAWN BY CEK 4/27/2017	ENG. APPROVAL
CLASS 81	SUB 01	DRAWING USAGE CUSTOMER
	CHECKED BY BMC 5/12/2017	



Locations:
New York, NY
Atlanta, GA
Los Angeles, CA
Plymouth, IN
Salem, OR
Dallas, TX

Engineering
Support Team:
1-888-753-7446

PART NO.	UDS-SQNPL	PAGE 2 OF 2
DWG. NO.	UDS-SQNPL	