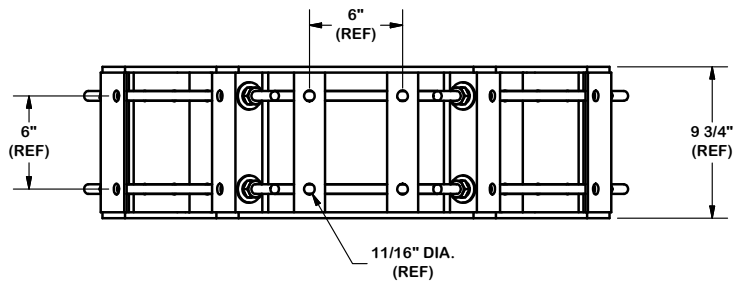
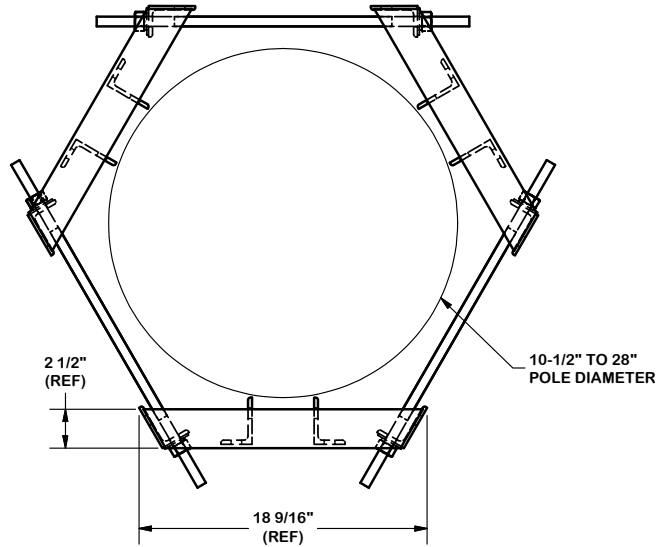
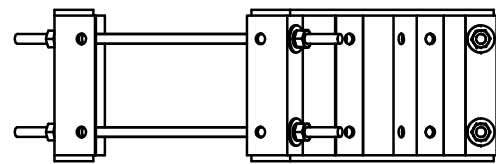
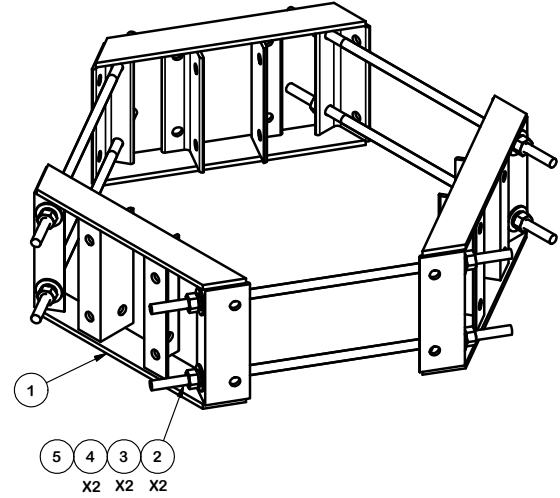


NOTE:
FOR POLE SIZES
28" TO 42" DIAMETER
ORDER SEPARATELY
PART # "LP-42"



PARTS LIST						
ITEM	QTY	PART NO.	PART DESCRIPTION	LENGTH	UNIT WT.	NET WT.
1	3	X-UGLM	MINI RING MOUNT WELDMENT		21.67	65.00
2	12	G58FW	5/8" HDG USS FLATWASHER		0.07	0.85
3	12	G58LW	5/8" HDG LOCKWASHER		0.03	0.31
4	12	G58NUT	5/8" HDG HEAVY 2H HEX NUT		0.13	1.56
5	6	G58R-24	5/8" x 24" THREADED ROD (HDG.)	24 in	2.09	12.54
5	6	G58R-14	5/8" x 14" THREADED ROD (HDG.)	14 in	1.22	7.32
					TOTAL WT. #	87.58



TOLERANCE NOTES

TOLERANCES ON DIMENSIONS, UNLESS OTHERWISE NOTED ARE:
SAWED, SHEARED AND GAS CUT EDGES ($\pm 0.030"$)
DRILLED AND GAS CUT HOLES ($\pm 0.030"$) - NO CONING OF HOLES
LASER CUT EDGES AND HOLES ($\pm 0.010"$) - NO CONING OF HOLES
BENDS ARE $\pm 1/2$ DEGREE
ALL OTHER MACHINING ($\pm 0.030"$)
ALL OTHER ASSEMBLY ($\pm 0.060"$)

PROPRIETARY NOTE:
THE DATA AND TECHNIQUES CONTAINED IN THIS DRAWING ARE PROPRIETARY INFORMATION OF VALMONT INDUSTRIES AND CONSIDERED A TRADE SECRET. ANY USE OR DISCLOSURE WITHOUT THE CONSENT OF VALMONT INDUSTRIES IS STRICTLY PROHIBITED.

DESCRIPTION
MINI RING MOUNT ASSEMBLY
(10-1/2" TO 28" DIA)

SITE PRO 1
A valmont COMPANY

Locations:
New York, NY
Atlanta, GA
Los Angeles, CA
Plymouth, IN
Salem, OR
Dallas, TX

Engineering Support Team:
1-888-753-7446

REV	DESCRIPTION OF REVISIONS	CPD	BY	DATE
A	REDRAWN IN INV. UPDATED VIEWS & TABLE		KC8	7/25/2012

CPD NO. 4923	DRAWN BY BMC 12/20/2010	ENG. APPROVAL
CLASS 81	SUB 01	DRAWING USAGE CUSTOMER
CHECKED BY CEK 8/24/2012		

PART NO. UGLM	PAGE 1 OF 1
DWG. NO. UGLM	