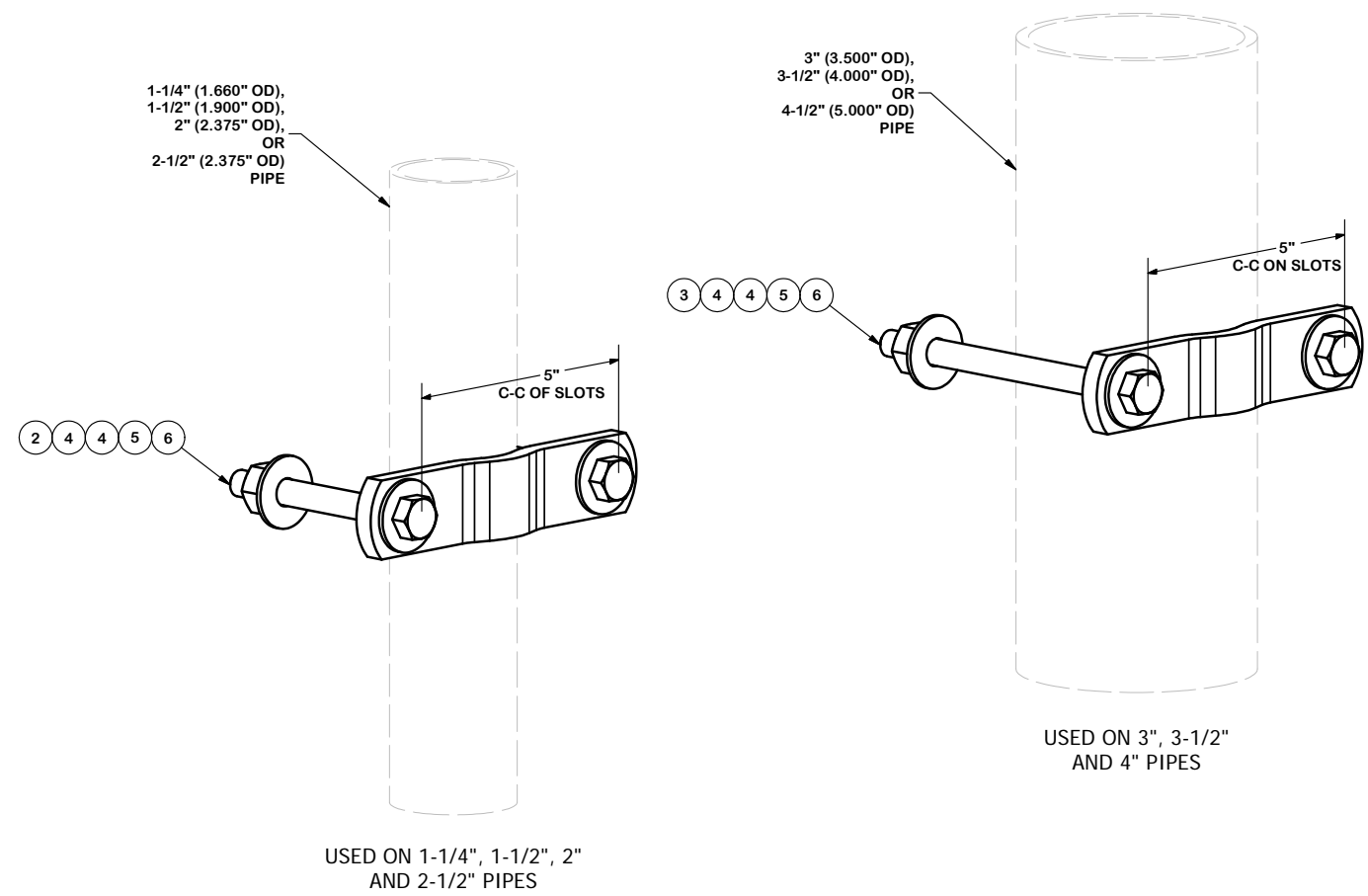


PARTS LIST						
ITEM	QTY	PART NO.	PART DESCRIPTION	LENGTH	UNIT WT.	NET WT.
1	8	X-115765	5" V-CLAMP		1.02	8.15
2	8	G12045	1/2" x 4.5" HDG HEX BOLT GR5 FULL THREAD		0.30	2.38
3	8	G12065	1/2" x 6-1/2" HDG HEX BOLT GR5 FULL THREAD		0.41	3.28
4	32	G12FW	1/2" HDG USS FLATWASHER		0.03	1.09
5	16	G12LW	1/2" HDG LOCKWASHER		0.01	0.22
6	16	G12NUT	1/2" HDG HEAVY 2H HEX NUT		0.07	1.15
					TOTAL WT. #	15.72



**TOLERANCE NOTES**

TOLERANCES ON DIMENSIONS, UNLESS OTHERWISE NOTED ARE:  
 SAWED, SHEARED AND GAS CUT EDGES ( $\pm 0.030"$ )  
 DRILLED AND GAS CUT HOLES ( $\pm 0.030"$ ) - NO CONING OF HOLES  
 LASER CUT EDGES AND HOLES ( $\pm 0.010"$ ) - NO CONING OF HOLES  
 BENDS ARE  $\pm 1/2$  DEGREE  
 ALL OTHER MACHINING ( $\pm 0.030"$ )  
 ALL OTHER ASSEMBLY ( $\pm 0.060"$ )

PROPRIETARY NOTE:  
 THE DATA AND TECHNIQUES CONTAINED IN THIS DRAWING ARE PROPRIETARY INFORMATION OF VALMONT  
 INDUSTRIES AND CONSIDERED A TRADE SECRET. ANY USE OR DISCLOSURE WITHOUT THE CONSENT OF  
 VALMONT INDUSTRIES IS STRICTLY PROHIBITED.

DESCRIPTION		UNIVERSAL PIPE ADAPTER KIT SITE PRO 1	
CPD NO. 4893	DRAWN BY RH18 12/1/2010	ENG. APPROVAL	
CLASS 81	SUB 01	DRAWING USAGE CATALOG	CHECKED BY BMC 12/1/2010

 A valmont COMPANY	Locations: New York, NY Atlanta, GA Los Angeles, CA Plymouth, IN Salem, OR Dallas, TX
	Engineering Support Team: 1-888-753-7446
PART NO.	UPA-K
DWG. NO.	UPA-K