

PARTS LIST						
ITEM	QTY	PART NO.	PART DESCRIPTION	LENGTH	UNIT WT.	NET WT.
1	6	X-LWRM	RING MOUNT WELDMENT		68.81	412.85
2	6	X-RMBP	RING MOUNT BENT PLATE CONNECTION	15 1/2 in	17.02	102.13
3	6	X-VFAW	SUPPORT ARM		71.41	428.44
4	6	X-VFAPL4	VFA-HD PIVOT PLATE	12 in	15.88	95.30
5	30	SCX2	CROSSOVER PLATE	7 in	4.80	143.89
6	6	P284	2-3/8" X 84" SCH 40 GALVANIZED PIPE	84 in	26.91	161.47
7	6	P30126	2-7/8" O.D. X 126" SCH. 40 PIPE	126 in	64.63	387.76
8	12	X-127594	FLAT DISK CLAMP PLATE 4" CENTERS (GALV.)		2.51	30.08
9	24	X-100064	CLAMP (4" V-CLAMP) GALVANIZED		0.92	22.12
10	12	A34212	3/4" x 2-1/2" UNC HEX BOLT (A325)	2 1/2 in	0.48	5.75
11	18	G34FW	3/4" HDG USS FLATWASHER		0.06	1.06
12	12	G34LW	3/4" HDG LOCKWASHER		0.04	0.51
13	12	G34NUT	3/4" HDG HEAVY 2H HEX NUT		0.21	2.55
14	18	G58R-48	5/8" x 48" THREADED ROD (HDG.)		4.18	75.27
15	12	X-UB5300	5/8" X 3" X 5-1/4" X 2-1/2" U-BOLT (HDG.)		1.15	13.79
16	24	A582112	5/8" x 2-1/2" HDG A325 HEX BOLT	2 1/2 in	0.33	8.02
17	24	A582114	5/8" x 2-1/4" HDG A325 HEX BOLT	2 1/4 in	0.31	7.50
18	108	G58LW	5/8" HDG LOCKWASHER		0.03	2.82
19	108	G58NUT	5/8" HDG HEAVY 2H HEX NUT		0.13	14.03
20	60	X-UB1212	1/2" X 2-1/2" X 4-1/2" X 2" U-BOLT (HDG.)		0.60	35.84
21	60	X-UB1300	1/2" X 3" X 5" X 2" GALV U-BOLT		0.74	44.32
22	24	G12065	1/2" x 6-1/2" HDG HEX BOLT GR5 FULL THREAD	5 1/2 in	0.41	9.83
23	24	G1204	1/2" x 4" HDG HEX BOLT GR5 FULL THREAD	4 in	0.27	6.48
24	288	G12FW	1/2" HDG USS FLATWASHER	3/32 in	0.03	9.82
25	288	G12LW	1/2" HDG LOCKWASHER	1/8 in	0.01	4.00
26	288	G12NUT	1/2" HDG HEAVY 2H HEX NUT		0.07	20.63
					TOTAL WT. #	1962.16

TOLERANCE NOTES

TOLERANCES ON DIMENSIONS, UNLESS OTHERWISE NOTED ARE:
 SAWED, SHEARED AND GAS CUT EDGES ($\pm 0.030"$)
 DRILLED AND GAS CUT HOLES ($\pm 0.030"$) - NO CONING OF HOLES
 LASER CUT EDGES AND HOLES ($\pm 0.010"$) - NO CONING OF HOLES
 BENDS ARE $\pm 1/2$ DEGREE
 ALL OTHER MACHINING ($\pm 0.030"$)
 ALL OTHER ASSEMBLY ($\pm 0.060"$)

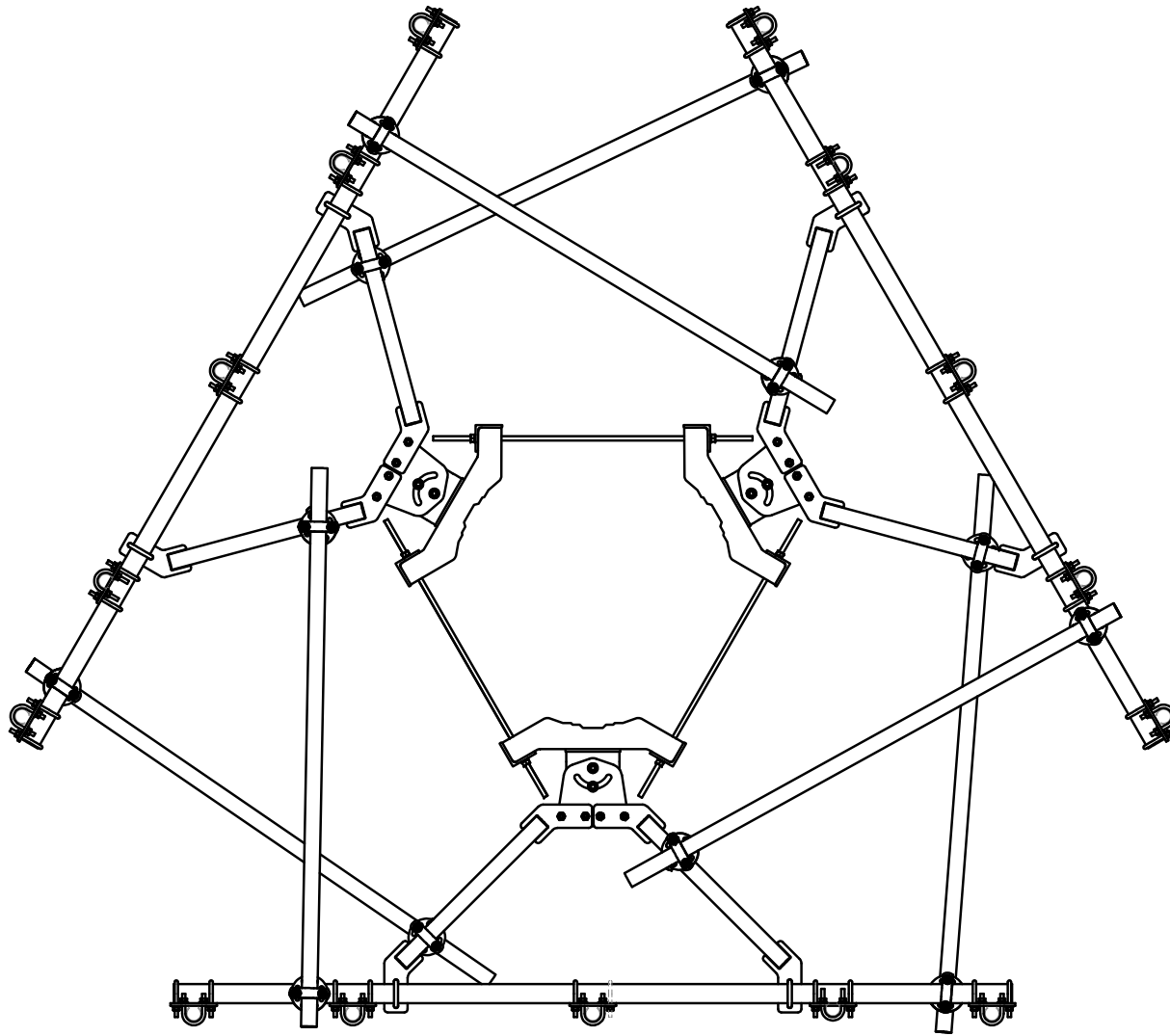
PROPRIETARY NOTE:
 THE DATA AND TECHNIQUES CONTAINED IN THIS DRAWING ARE PROPRIETARY INFORMATION OF VALMONT INDUSTRIES AND CONSIDERED A TRADE SECRET. ANY USE OR DISCLOSURE WITHOUT THE CONSENT OF VALMONT INDUSTRIES IS STRICTLY PROHIBITED.

DESCRIPTION
 THREE SECTORS HEAVY WLL FRAME
 AND MONOPOLE ATTACHMENT HARDWARE
 NO MOUNTING PIPES

SITE PRO 1
 A valmont COMPANY
 Engineering Support Team:
 1-888-753-7446
 Locations:
 New York, NY
 Atlanta, GA
 Los Angeles, CA
 Plymouth, IN
 Salem, OR
 Dallas, TX

CPD NO.	DRAWN BY CEK 10/24/2018	ENG. APPROVAL
CLASS 81	SUB 02	DRAWING USAGE CUSTOMER
		CHECKED BY BMC 10/24/2018

PART NO. VFA10-HD3L5NP	PAGE 1 OF 4
DWG. NO. VFA10-HD3L5NP	



TOLERANCE NOTES

TOLERANCES ON DIMENSIONS, UNLESS OTHERWISE NOTED ARE:
 SAWED, SHEARED AND GAS CUT EDGES ($\pm 0.030"$)
 DRILLED AND GAS CUT HOLES ($\pm 0.030"$) - NO CONING OF HOLES
 LASER CUT EDGES AND HOLES ($\pm 0.010"$) - NO CONING OF HOLES
 BENDS ARE $\pm 1/2$ DEGREE
 ALL OTHER MACHINING ($\pm 0.030"$)
 ALL OTHER ASSEMBLY ($\pm 0.060"$)

PROPRIETARY NOTE:
 THE DATA AND TECHNIQUES CONTAINED IN THIS DRAWING ARE PROPRIETARY INFORMATION OF VALMONT INDUSTRIES AND CONSIDERED A TRADE SECRET. ANY USE OR DISCLOSURE WITHOUT THE CONSENT OF VALMONT INDUSTRIES IS STRICTLY PROHIBITED.

DESCRIPTION
 THREE SECTORS HEAVY WLL FRAME
 AND MONOPOLE ATTACHMENT HARDWARE
 NO MOUNTING PIPES

CPD NO.	DRAWN BY	ENG. APPROVAL
CLASS	DRAWING USAGE	CHECKED BY
81	02	BMC 10/24/2018
	CUSTOMER	

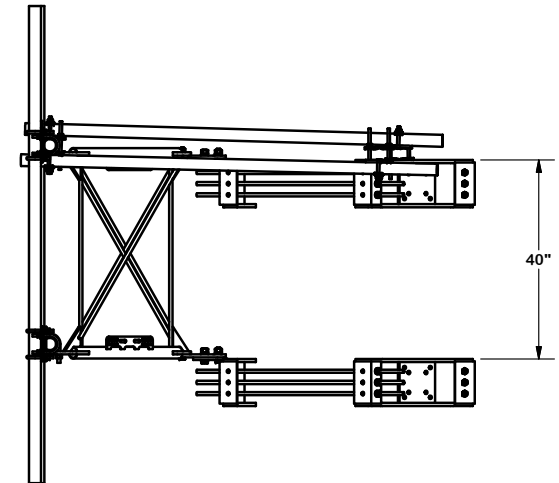
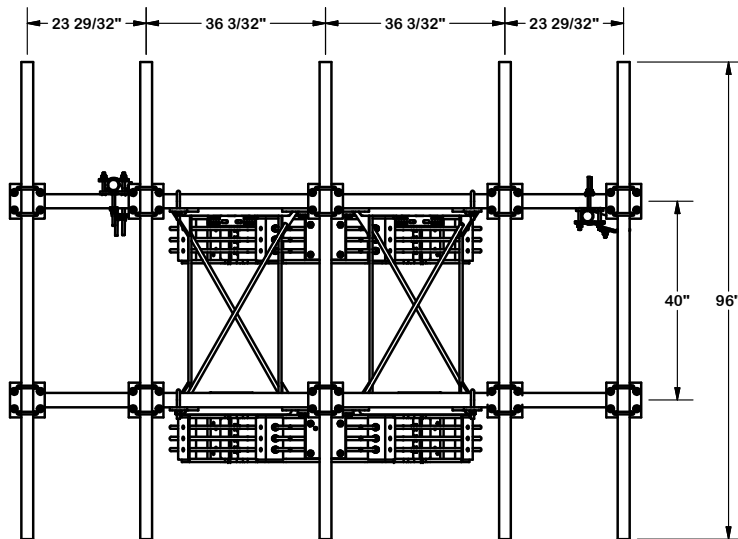
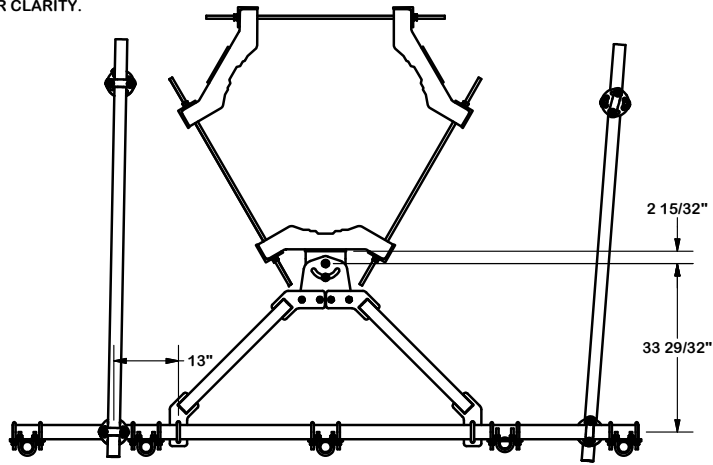


Engineering
 Support Team:
 1-888-753-7446

Locations:
 New York, NY
 Atlanta, GA
 Los Angeles, CA
 Plymouth, IN
 Salem, OR
 Dallas, TX

PART NO.	VFA10-HD3L5NP
DWG. NO.	VFA10-HD3L5NP

NOTE:
OTHER SECTORS REMOVED FOR CLARITY.



TOLERANCE NOTES

TOLERANCES ON DIMENSIONS, UNLESS OTHERWISE NOTED ARE:
 SAWED, SHEARED AND GAS CUT EDGES (± 0.030 ")
 DRILLED AND GAS CUT HOLES (± 0.030 ") - NO CONING OF HOLES
 LASER CUT EDGES AND HOLES (± 0.010 ") - NO CONING OF HOLES
 BENDS ARE $\pm 1/2$ DEGREE
 ALL OTHER MACHINING (± 0.030 ")
 ALL OTHER ASSEMBLY (± 0.060 ")

PROPRIETARY NOTE:
 THE DATA AND TECHNIQUES CONTAINED IN THIS DRAWING ARE PROPRIETARY INFORMATION OF VALMONT INDUSTRIES AND CONSIDERED A TRADE SECRET. ANY USE OR DISCLOSURE WITHOUT THE CONSENT OF VALMONT INDUSTRIES IS STRICTLY PROHIBITED.

DESCRIPTION
 THREE SECTORS HEAVY WLL FRAME
 AND MONOPOLE ATTACHMENT HARDWARE
 NO MOUNTING PIPES



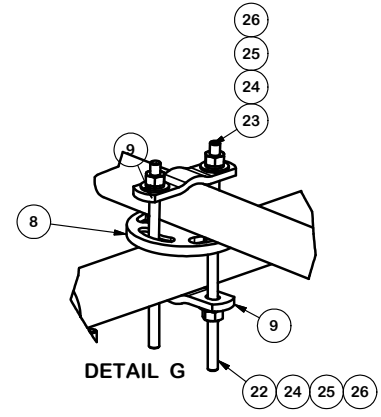
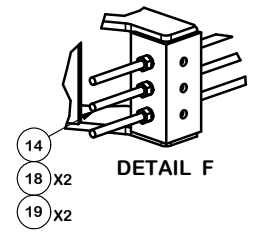
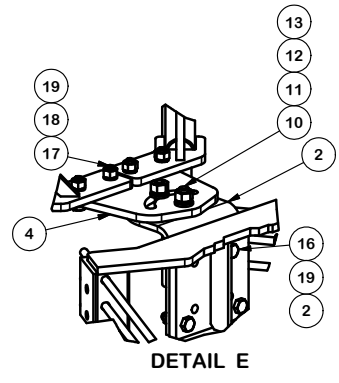
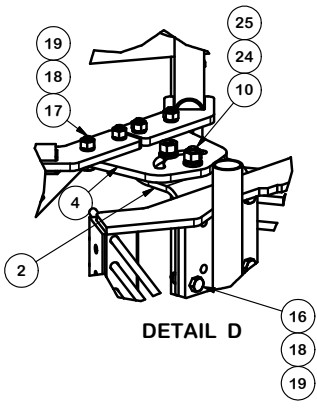
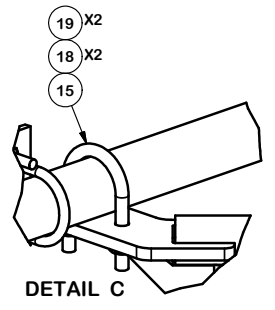
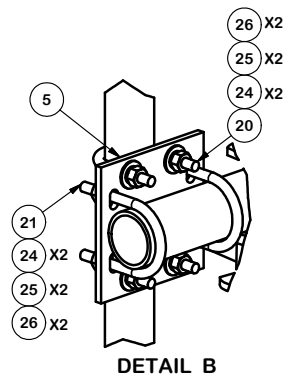
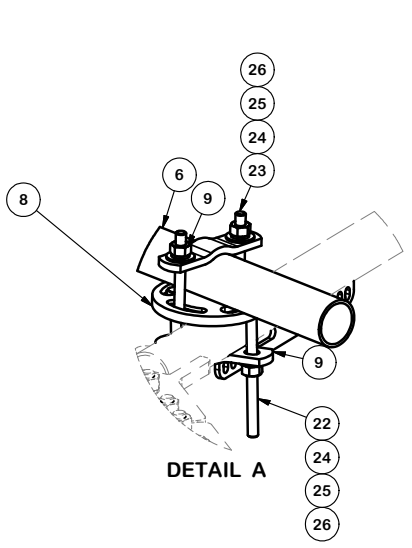
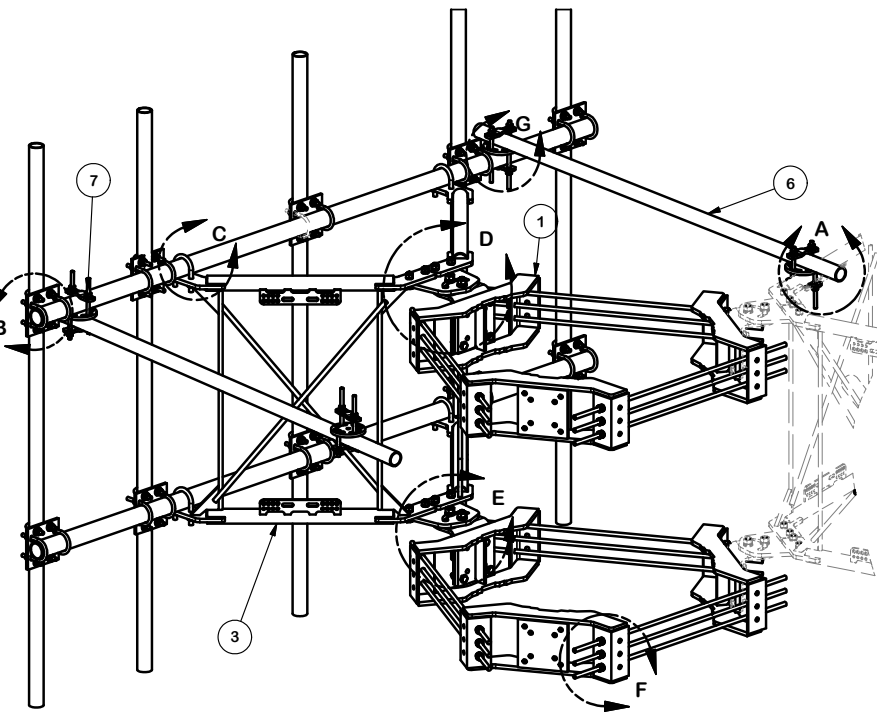
Engineering
 Support Team:
 1-888-753-7446

Locations:
 New York, NY
 Atlanta, GA
 Los Angeles, CA
 Plymouth, IN
 Salem, OR
 Dallas, TX

CPD NO.	DRAWN BY CEK 10/24/2018	ENG. APPROVAL
CLASS 81	SUB 02	DRAWING USAGE CUSTOMER
	CHECKED BY BMC 10/24/2018	

PART NO. VFA10-HD3L5NP	PAGE 3 OF 4
DWG. NO. VFA10-HD3L5NP	

NOTE:
OTHER SECTORS REMOVED FOR CLARITY.



TOLERANCE NOTES

TOLERANCES ON DIMENSIONS, UNLESS OTHERWISE NOTED ARE:
 SAWED, SHEARED AND GAS CUT EDGES ($\pm 0.030"$)
 DRILLED AND GAS CUT HOLES ($\pm 0.030"$) - NO CONING OF HOLES
 LASER CUT EDGES AND HOLES ($\pm 0.010"$) - NO CONING OF HOLES
 BENDS ARE $\pm 1/2$ DEGREE
 ALL OTHER MACHINING ($\pm 0.030"$)
 ALL OTHER ASSEMBLY ($\pm 0.060"$)

PROPRIETARY NOTE:
 THE DATA AND TECHNIQUES CONTAINED IN THIS DRAWING ARE PROPRIETARY INFORMATION OF VALMONT INDUSTRIES AND CONSIDERED A TRADE SECRET. ANY USE OR DISCLOSURE WITHOUT THE CONSENT OF VALMONT INDUSTRIES IS STRICTLY PROHIBITED.

DESCRIPTION
 THREE SECTORS HEAVY WLL FRAME
 AND MONOPOLE ATTACHMENT HARDWARE
 NO MOUNTING PIPES

SITE PRO 1
 Engineering Support Team:
 1-888-753-7446

Locations:
 New York, NY
 Atlanta, GA
 Los Angeles, CA
 Plymouth, IN
 Salem, OR
 Dallas, TX

A valmont COMPANY

CPD NO.	DRAWN BY	ENG. APPROVAL
CLASS	DRAWING USAGE	CHECKED BY
81	CUSTOMER	BMC 10/24/2018
SUB		
02		

PART NO.	VFA10-HD3L5NP
DWG. NO.	VFA10-HD3L5NP