

2-3/8" ANTENNA MOUNTING PIPES
(ORDERED SEPARATELY)

PARTS LIST


ITEM	QTY	PART NO.	PART DESCRIPTION	LENGTH	UNIT WT.	NET WT.
1	6	X-LWRM	RING MOUNT WELDMENT		68.81	412.85
2	2	X-RMBPTC	RING MOUNT BENT PLATE TOP CONNECTION	13 in	14.80	29.61
3	1	X-RMBPBC	RING MOUNT BENT PLATE BOTTOM CONNECTION	12 in	14.80	14.80
4	2	X-233792	PIVOT PLATE	11 1/16 in	9.09	18.18
5	2	X-233791	SUPPORT ARM		80.39	160.78
6	1	X-TBBB	TIE BACK BENT BRACKET	6 19/32 in	3.95	3.95
7	8	SCX1	CROSSOVER PLATE 2-3/8" X 2-3/8"	6 in	3.71	29.67
8	1	P284	2-3/8" X 84" SCH 40 GALVANIZED PIPE	84 in	26.91	26.91
9	2	P2126	2-3/8" OD X 126" SCH 40 GALVANIZED PIPE	126 in	40.75	81.50
10	1	X-127594	FLAT DISK CLAMP PLATE 4" CENTERS (GALV.)		2.48	2.48
11	2	X-100064	CLAMP (4" V-CLAMP) GALVANIZED		0.91	1.83
12	3	A34214	3/4"-10 X 2-1/4" A325 BOLT	2 1/4 in	0.47	1.42
13	3	G34LW	3/4" HDG LOCKWASHER		0.04	0.13
14	3	G34NUT	3/4" HDG HEAVY 2H HEX NUT		0.21	0.64
15	18	G58R-48	5/8" x 48" THREADED ROD (HDG.)	48 in	0.40	7.18
16	12	A582112	5/8" x 2-1/2" HDG A325 HEX BOLT	2 1/2 in	0.33	4.01
17	48	G58LW	5/8" HDG LOCKWASHER		0.03	1.25
18	48	G58NUT	5/8" HDG HEAVY 2H HEX NUT		0.13	6.23
19	37	X-UB1212	1/2" X 2-1/2" X 4-1/2" X 2" GALV. U-BOLT		0.66	24.29
20	4	G1204	1/2" x 4" HDG HEX BOLT GR5 FULL THREAD	4 in	0.27	1.08
21	8	G1202	1/2" x 2" HDG HEX BOLT GR5	2 in	0.18	1.41
22	84	G12FW	1/2" HDG USS FLATWASHER	3/32 in	0.03	2.86
23	86	G12LW	1/2" HDG LOCKWASHER	1/8 in	0.01	1.20
24	86	G12NUT	1/2" HDG HEAVY 2H HEX NUT		0.07	6.16
					TOTAL WT. #	908.50

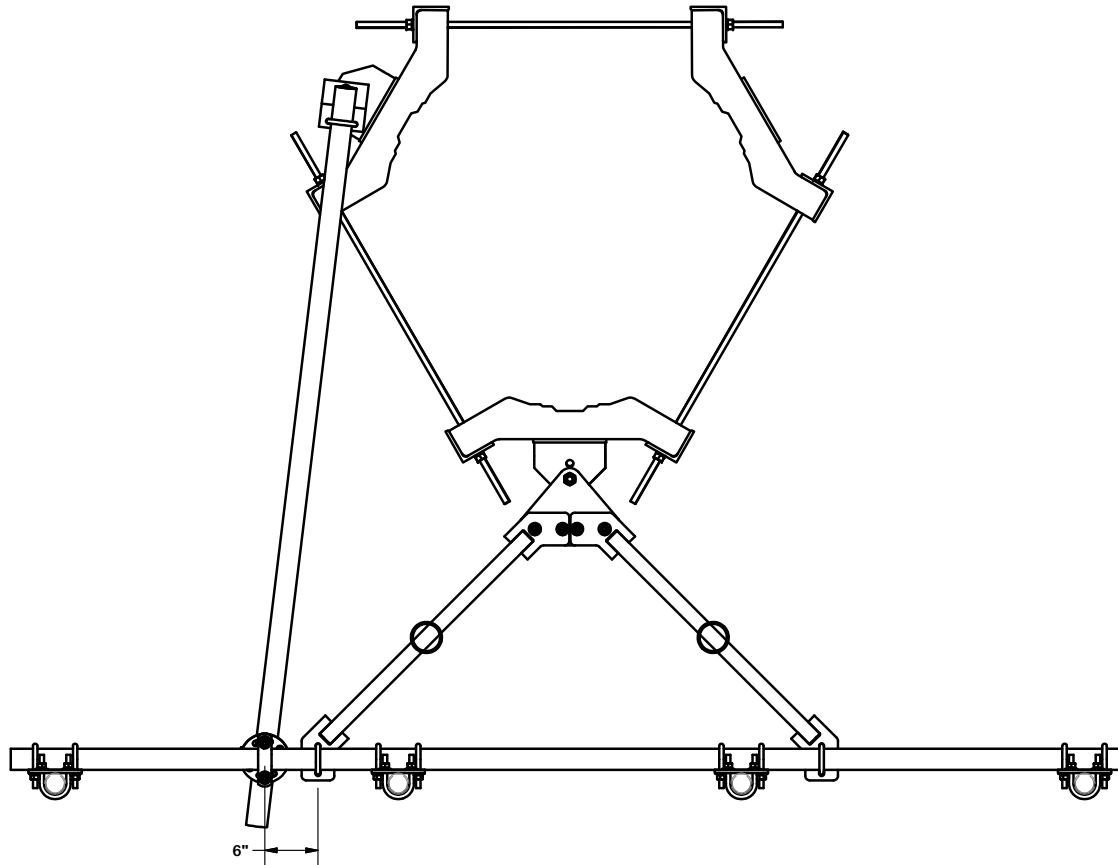
ANT 16001

TOLERANCE NOTES
 TOLERANCES ON DIMENSIONS, UNLESS OTHERWISE NOTED ARE:
 SAWED, SHEARED AND GAS CUT EDGES ($\pm 0.030"$)
 DRILLED AND GAS CUT HOLES ($\pm 0.030"$) - NO CONING OF HOLES
 LASER CUT EDGES AND HOLES ($\pm 0.010"$) - NO CONING OF HOLES
 BENDS ARE $\pm 1/2$ DEGREE
 ALL OTHER MACHINING ($\pm 0.030"$)
 ALL OTHER ASSEMBLY ($\pm 0.060"$)

PROPRIETARY NOTE:
 THE DATA AND TECHNIQUES CONTAINED IN THIS DRAWING ARE PROPRIETARY INFORMATION OF VALMONT INDUSTRIES AND CONSIDERED A TRADE SECRET. ANY USE OR DISCLOSURE WITHOUT THE CONSENT OF VALMONT INDUSTRIES IS STRICTLY PROHIBITED.

DESCRIPTION ONE SECTOR HEAVY 5 FRAME AND MONOPOLE ATTACHMENT HARDWARE NO MOUNTING PIPES		
CPD NO.	DRAWN BY CEK 9/14/2016	ENG. APPROVAL
CLASS 81	SUB 02	DRAWING USAGE CUSTOMER
	CHECKED BY BMC 10/17/2016	

 A valmont COMPANY	Locations: New York, NY Atlanta, GA Los Angeles, CA Plymouth, IN Salem, OR Dallas, TX		
	Engineering Support Team: 1-888-753-7446		
PART NO.	VFA10-RRU1L4NP	PAGE	1 OF 4
DWG. NO.	VFA10-RRU1L4NP		



ANT 16001

TOLERANCE NOTES

TOLERANCES ON DIMENSIONS, UNLESS OTHERWISE NOTED ARE:
 SAWED, SHEARED AND GAS CUT EDGES ($\pm 0.030"$)
 DRILLED AND GAS CUT HOLES ($\pm 0.030"$) - NO CONING OF HOLES
 LASER CUT EDGES AND HOLES ($\pm 0.010"$) - NO CONING OF HOLES
 BENDS ARE $\pm 1/2$ DEGREE
 ALL OTHER MACHINING ($\pm 0.030"$)
 ALL OTHER ASSEMBLY ($\pm 0.060"$)

PROPRIETARY NOTE:
 THE DATA AND TECHNIQUES CONTAINED IN THIS DRAWING ARE PROPRIETARY INFORMATION OF VALMONT INDUSTRIES AND CONSIDERED A TRADE SECRET. ANY USE OR DISCLOSURE WITHOUT THE CONSENT OF VALMONT INDUSTRIES IS STRICTLY PROHIBITED.

DESCRIPTION
 ONE SECTOR HEAVY 5 FRAME
 AND MONOPOLE ATTACHMENT HARDWARE
 NO MOUNTING PIPES

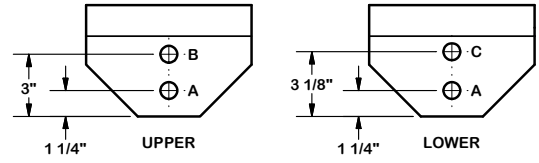
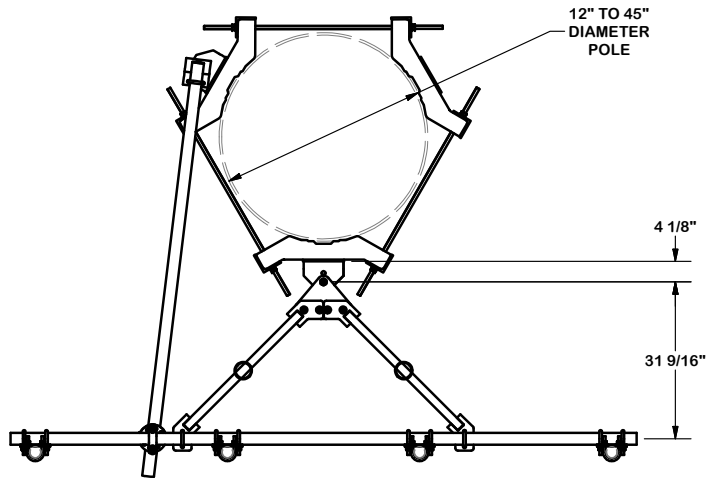
CPD NO.	DRAWN BY	ENG. APPROVAL
CLASS	CEK 9/14/2016	CHECKED BY
81	02	BMC 10/17/2016
	DRAWING USAGE	CUSTOMER



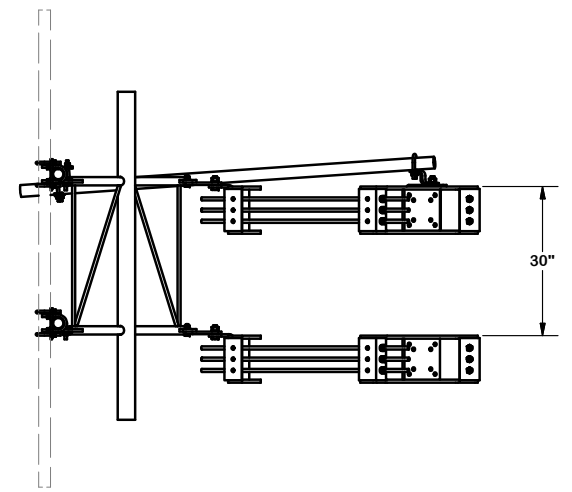
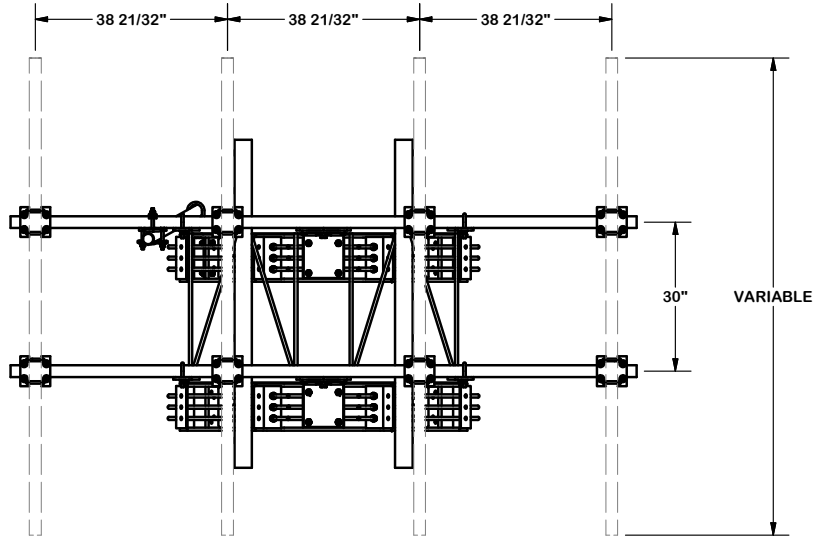
Locations:
 New York, NY
 Atlanta, GA
 Los Angeles, CA
 Plymouth, IN
 Salem, OR
 Dallas, TX

Engineering
 Support Team:
 1-888-753-7446

PART NO.	VFA10-RRU1L4NP
DWG. NO.	VFA10-RRU1L4NP



- NOTES:**
1. USE HOLE "A" IN UPPER AND LOWER BRACKETS FOR STRAIGHT LEGS.
 2. USE HOLE "A" IN UPPER BRACKET AND HOLE "C" IN LOWER BRACKET FOR 3°.
 3. USE HOLE "B" IN UPPER BRACKET AND HOLE "C" IN LOWER BRACKET FOR 0.2°.



ANT 16001

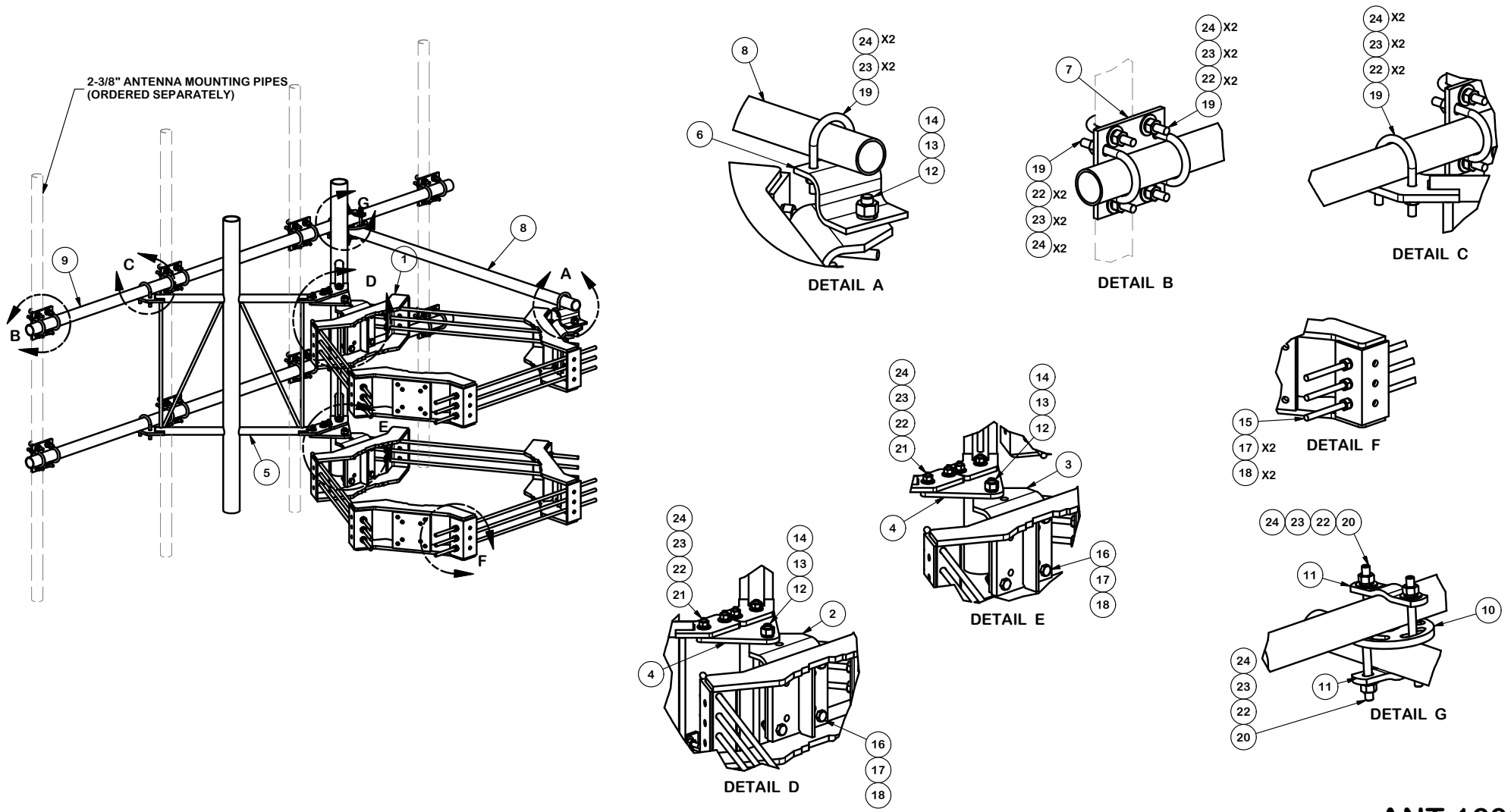
TOLERANCE NOTES

TOLERANCES ON DIMENSIONS, UNLESS OTHERWISE NOTED ARE:
 SAWED, SHEARED AND GAS CUT EDGES ($\pm 0.030"$)
 DRILLED AND GAS CUT HOLES ($\pm 0.030"$) - NO CONING OF HOLES
 LASER CUT EDGES AND HOLES ($\pm 0.010"$) - NO CONING OF HOLES
 BENDS ARE $\pm 1/2$ DEGREE
 ALL OTHER MACHINING ($\pm 0.030"$)
 ALL OTHER ASSEMBLY ($\pm 0.060"$)

PROPRIETARY NOTE:
 THE DATA AND TECHNIQUES CONTAINED IN THIS DRAWING ARE PROPRIETARY INFORMATION OF VALMONT INDUSTRIES AND CONSIDERED A TRADE SECRET. ANY USE OR DISCLOSURE WITHOUT THE CONSENT OF VALMONT INDUSTRIES IS STRICTLY PROHIBITED.

DESCRIPTION		ONE SECTOR HEAVY 5 FRAME AND MONOPOLE ATTACHMENT HARDWARE NO MOUNTING PIPES	
CPD NO.	DRAWN BY	ENG. APPROVAL	
	CEK 9/14/2016		
CLASS	SUB	DRAWING USAGE	CHECKED BY
81	02	CUSTOMER	BMC 10/17/2016

 A valmont COMPANY	Locations: New York, NY Atlanta, GA Los Angeles, CA Plymouth, IN Salem, OR Dallas, TX		
	Engineering Support Team: 1-888-753-7446		
PART NO.	VFA10-RRU1L4NP	PAGE	3 OF 4
DWG. NO.	VFA10-RRU1L4NP		



ANT 16001

TOLERANCE NOTES

TOLERANCES ON DIMENSIONS, UNLESS OTHERWISE NOTED ARE:
 SAWED, SHEARED AND GAS CUT EDGES ($\pm 0.030"$)
 DRILLED AND GAS CUT HOLES ($\pm 0.030"$) - NO CONING OF HOLES
 LASER CUT EDGES AND HOLES ($\pm 0.010"$) - NO CONING OF HOLES
 BENDS ARE $\pm 1/2$ DEGREE
 ALL OTHER MACHINING ($\pm 0.030"$)
 ALL OTHER ASSEMBLY ($\pm 0.060"$)

PROPRIETARY NOTE:
 THE DATA AND TECHNIQUES CONTAINED IN THIS DRAWING ARE PROPRIETARY INFORMATION OF VALMONT INDUSTRIES AND CONSIDERED A TRADE SECRET. ANY USE OR DISCLOSURE WITHOUT THE CONSENT OF VALMONT INDUSTRIES IS STRICTLY PROHIBITED.

DESCRIPTION		ONE SECTOR HEAVY 5 FRAME AND MONOPOLE ATTACHMENT HARDWARE NO MOUNTING PIPES	
CPD NO.	DRAWN BY	ENG. APPROVAL	
	CEK 9/14/2016		
CLASS	SUB	DRAWING USAGE	CHECKED BY
81	02	CUSTOMER	BMC 10/17/2016

 A valmont COMPANY	Locations:	New York, NY	Atlanta, GA Los Angeles, CA Plymouth, IN Salem, OR Dallas, TX
	Engineering Support Team:	1-888-753-7446	
PART NO.	VFA10-RRU1L4NP		
DWG. NO.	VFA10-RRU1L4NP		