

PARTS LIST						
ITEM	QTY	PART NO.	PART DESCRIPTION	LENGTH	UNIT WT.	NET WT.
1	1	X-192043	UPPER MOUNTING BRACKET FOR V-FRAME		8.73	8.73
2	1	X-192044	LOWER MOUNTING BRACKET FOR V-FRAME		8.73	8.73
3	4	X-158320	ANGLE CLAMP	16 1/2 in	8.51	34.03
4	4	X-126501	BRACKET ANGLE LEG MOUNTING	16 1/2 in	7.13	28.51
5	2	X-159999	BACKING PLATE	6 9/16 in	5.73	11.46
6	2	X-233792	PIVOT PLATE	11 1/16 in	9.09	18.18
7	2	X-233791	SUPPORT ARM		80.39	160.78
8	8	SCX1	CROSSOVER PLATE 2-3/8" X 2-3/8"	6 in	3.71	29.67
9	8	X-124312	1/2" X 2" X 2" ANGLE SPACER; WITH 9/16" HOLE	2 in	0.53	4.26
10	3	P2126	2-3/8" OD X 126" SCH 40 GALVANIZED PIPE	126 in	40.75	122.26
11	2	X-127594	FLAT DISK CLAMP PLATE 4" CENTERS (GALV.)		2.48	4.97
12	4	X-100064	CLAMP (4" V-CLAMP) GALVANIZED		0.91	3.65
13	2	A34214	3/4"-10 X 2-1/4" A325 BOLT	2 1/4 in	0.47	0.95
14	2	G34LW	3/4" HDG LOCKWASHER		0.04	0.09
15	2	G34NUT	3/4" HDG HEAVY 2H HEX NUT		0.21	0.42
16	8	G12R-20	1/2" x 20" GALV. THREADED ROD		1.12	8.92
17	36	X-UB1212	1/2" X 2-1/2" X 4-1/2" X 2" GALV. U-BOLT		0.66	23.63
18	10	G12065	1/2" x 6-1/2" HDG HEX BOLT GR5 FULL THREAD	6 1/2 in	0.41	4.09
19	6	G1204	1/2" x 4" HDG HEX BOLT GR5 FULL THREAD	4 in	0.27	1.62
20	8	G1203	1/2" x 3" HDG HEX BOLT GR5 FULL THREAD	3 in	0.22	1.74
21	8	G1202	1/2" x 2" HDG HEX BOLT GR5	2 in	0.18	1.41
22	120	G12FW	1/2" HDG USS FLATWASHER	3/32 in	0.03	4.09
23	120	G12LW	1/2" HDG LOCKWASHER	1/8 in	0.01	1.67
24	120	G12NUT	1/2" HDG HEAVY 2H HEX NUT		0.07	8.60
					TOTAL WT. #	492.44

ANT 16004

**TOLERANCE NOTES**

TOLERANCES ON DIMENSIONS, UNLESS OTHERWISE NOTED ARE:  
 SAWED, SHEARED AND GAS CUT EDGES ( $\pm 0.030"$ )  
 DRILLED AND GAS CUT HOLES ( $\pm 0.030"$ ) - NO CONING OF HOLES  
 LASER CUT EDGES AND HOLES ( $\pm 0.010"$ ) - NO CONING OF HOLES  
 BENDS ARE  $\pm 1/2$  DEGREE  
 ALL OTHER MACHINING ( $\pm 0.030"$ )  
 ALL OTHER ASSEMBLY ( $\pm 0.060"$ )

PROPRIETARY NOTE:  
 THE DATA AND TECHNIQUES CONTAINED IN THIS DRAWING ARE PROPRIETARY INFORMATION OF VALMONT INDUSTRIES AND CONSIDERED A TRADE SECRET. ANY USE OR DISCLOSURE WITHOUT THE CONSENT OF VALMONT INDUSTRIES IS STRICTLY PROHIBITED.

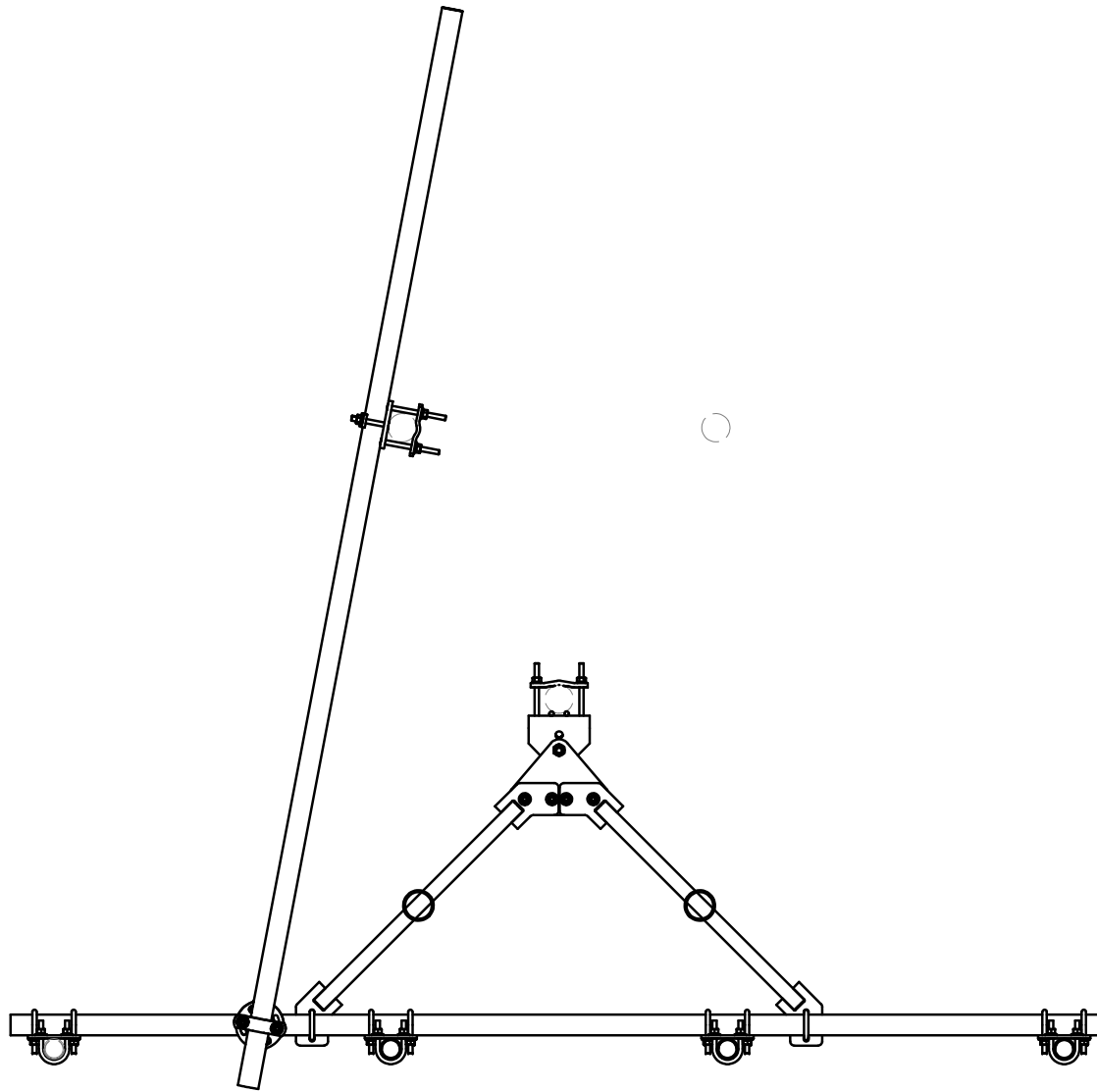
DESCRIPTION  
 ONE SECTOR HEAVY 5 FRAME AND  
 SELF-SUPPORT / GUYED TOWER  
 ATTACHMENT HDW. NO MOUNTING PIPES



Locations:  
 New York, NY  
 Atlanta, GA  
 Los Angeles, CA  
 Plymouth, IN  
 Salem, OR  
 Dallas, TX  
 Engineering Support Team:  
 1-888-753-7446

CPD NO.	DRAWN BY	ENG. APPROVAL
	CEK 9/19/2016	
CLASS	DRAWING USAGE	CHECKED BY
81	CUSTOMER	BMC 10/17/2016

PART NO.	VFA10-RRU1W4NP
DWG. NO.	VFA10-RRU1W4NP



ANT 16004

**TOLERANCE NOTES**

TOLERANCES ON DIMENSIONS, UNLESS OTHERWISE NOTED ARE:  
 SAWED, SHEARED AND GAS CUT EDGES ( $\pm 0.030"$ )  
 DRILLED AND GAS CUT HOLES ( $\pm 0.030"$ ) - NO CONING OF HOLES  
 LASER CUT EDGES AND HOLES ( $\pm 0.010"$ ) - NO CONING OF HOLES  
 BENDS ARE  $\pm 1/2$  DEGREE  
 ALL OTHER MACHINING ( $\pm 0.030"$ )  
 ALL OTHER ASSEMBLY ( $\pm 0.060"$ )

PROPRIETARY NOTE:  
 THE DATA AND TECHNIQUES CONTAINED IN THIS DRAWING ARE PROPRIETARY INFORMATION OF VALMONT INDUSTRIES AND CONSIDERED A TRADE SECRET. ANY USE OR DISCLOSURE WITHOUT THE CONSENT OF VALMONT INDUSTRIES IS STRICTLY PROHIBITED.

DESCRIPTION

ONE SECTOR HEAVY 5 FRAME AND  
 SELF-SUPPORT / GUYED TOWER  
 ATTACHMENT HDW. NO MOUNTING PIPES



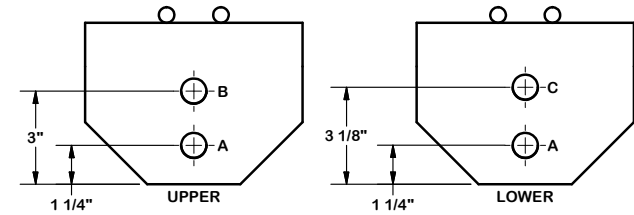
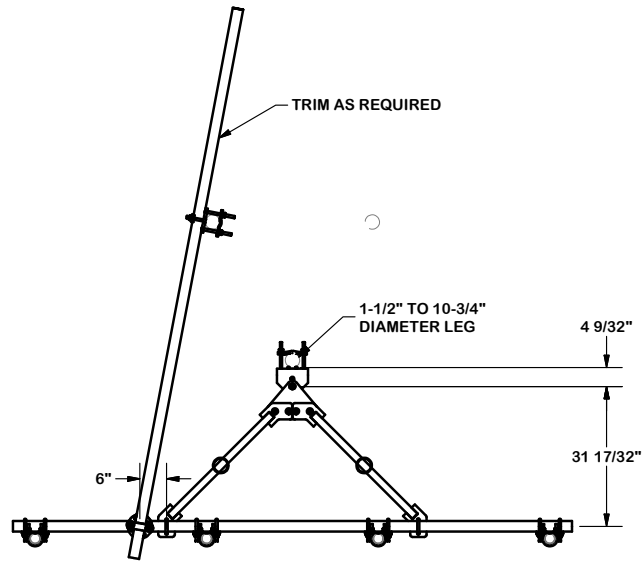
A valmont COMPANY

Engineering  
 Support Team:  
 1-888-753-7446

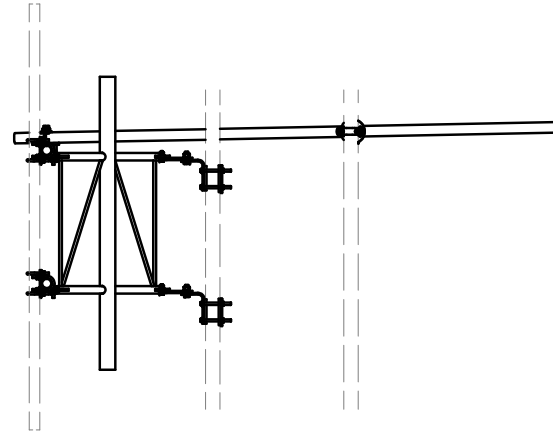
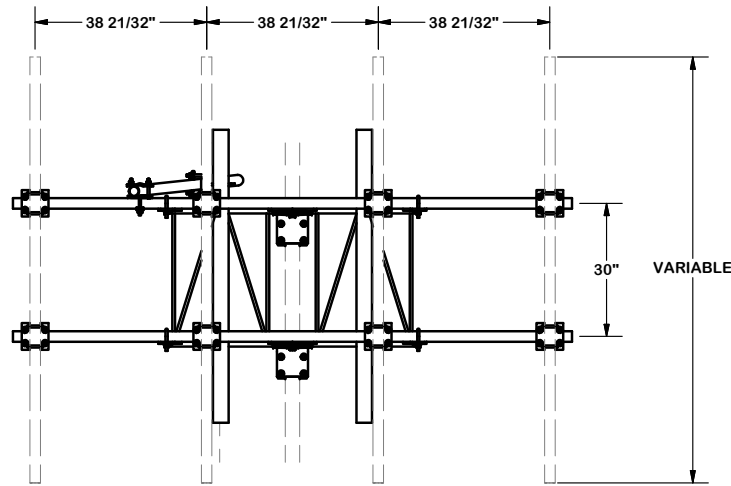
Locations:  
 New York, NY  
 Atlanta, GA  
 Los Angeles, CA  
 Plymouth, IN  
 Salem, OR  
 Dallas, TX

CPD NO.	DRAWN BY	ENG. APPROVAL
81	CEK 9/19/2016	BMC 10/17/2016
CLASS	SUB	DRAWING USAGE
81	02	CUSTOMER

PART NO.	VFA10-RRU1W4NP
DWG. NO.	VFA10-RRU1W4NP



- NOTES:**
1. USE HOLE "A" IN UPPER AND LOWER BRACKETS FOR STRAIGHT LEGS.
  2. USE HOLE "A" IN UPPER BRACKET AND HOLE "C" IN LOWER BRACKET FOR 2" IN 20' TAPER LEGS (3.309")
  3. USE HOLE "B" IN UPPER BRACKET AND HOLE "C" IN LOWER BRACKET FOR 6" IN 20' TAPER LEGS. (0.827")



**ANT 16004**

**TOLERANCE NOTES**

**TOLERANCES ON DIMENSIONS, UNLESS OTHERWISE NOTED ARE:**  
**SAWED, SHEARED AND GAS CUT EDGES ( $\pm 0.030"$ )**  
**DRILLED AND GAS CUT HOLES ( $\pm 0.030"$ ) - NO CONING OF HOLES**  
**LASER CUT EDGES AND HOLES ( $\pm 0.010"$ ) - NO CONING OF HOLES**  
**BENDS ARE  $\pm 1/2$  DEGREE**  
**ALL OTHER MACHINING ( $\pm 0.030"$ )**  
**ALL OTHER ASSEMBLY ( $\pm 0.060"$ )**

**PROPRIETARY NOTE:**  
 THE DATA AND TECHNIQUES CONTAINED IN THIS DRAWING ARE PROPRIETARY INFORMATION OF VALMONT INDUSTRIES AND CONSIDERED A TRADE SECRET. ANY USE OR DISCLOSURE WITHOUT THE CONSENT OF VALMONT INDUSTRIES IS STRICTLY PROHIBITED.

**DESCRIPTION**  
 ONE SECTOR HEAVY 5 FRAME AND  
 SELF-SUPPORT / GUYED TOWER  
 ATTACHMENT HDW. NO MOUNTING PIPES

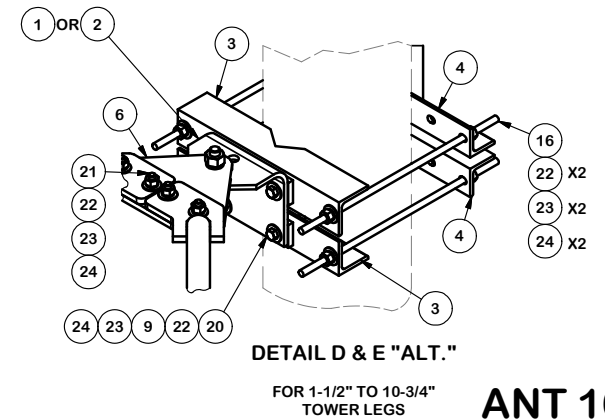
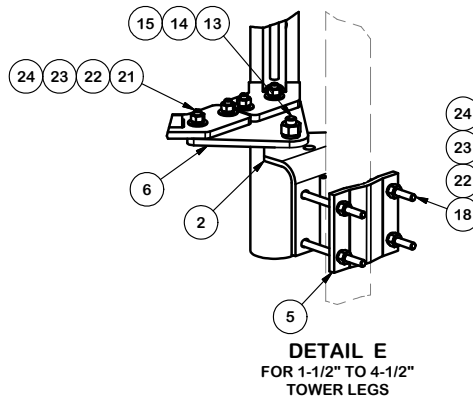
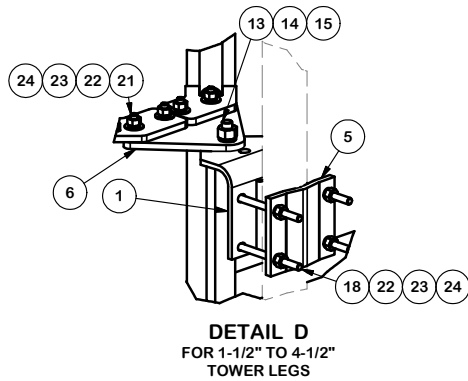
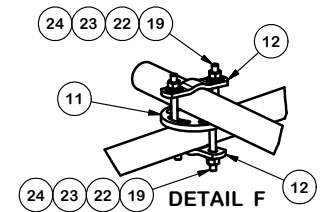
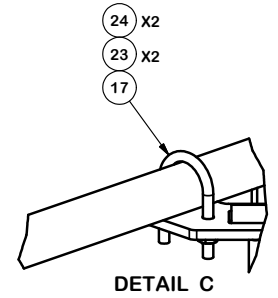
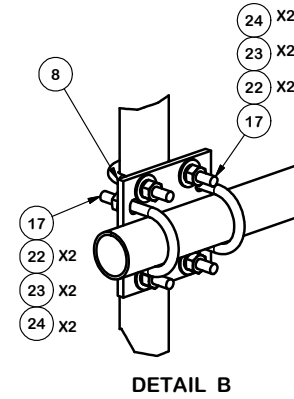
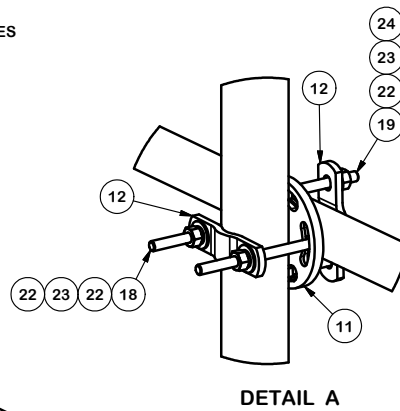
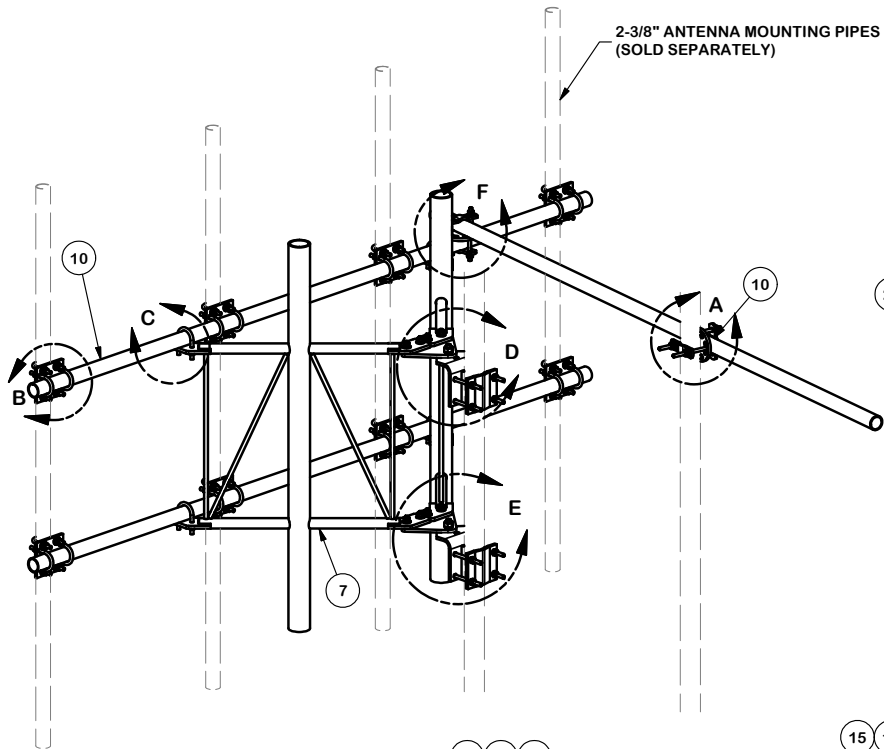


Locations:  
 New York, NY  
 Atlanta, GA  
 Los Angeles, CA  
 Plymouth, IN  
 Salem, OR  
 Dallas, TX

Engineering  
 Support Team:  
 1-888-753-7446

CPD NO.	DRAWN BY	ENG. APPROVAL
CLASS	DRAWING USAGE	CHECKED BY
81	02	CUSTOMER
		BMC 10/17/2016

PART NO.	VFA10-RRU1W4NP	PAGE
DWG. NO.	VFA10-RRU1W4NP	3 OF 4



**ANT 16004**

**TOLERANCE NOTES**

TOLERANCES ON DIMENSIONS, UNLESS OTHERWISE NOTED ARE:  
 SAWED, SHEARED AND GAS CUT EDGES ( $\pm 0.030"$ )  
 DRILLED AND GAS CUT HOLES ( $\pm 0.030"$ ) - NO CONING OF HOLES  
 LASER CUT EDGES AND HOLES ( $\pm 0.010"$ ) - NO CONING OF HOLES  
 BENDS ARE  $\pm 1/2$  DEGREE  
 ALL OTHER MACHINING ( $\pm 0.030"$ )  
 ALL OTHER ASSEMBLY ( $\pm 0.060"$ )

PROPRIETARY NOTE:  
 THE DATA AND TECHNIQUES CONTAINED IN THIS DRAWING ARE PROPRIETARY INFORMATION OF VALMONT INDUSTRIES AND CONSIDERED A TRADE SECRET. ANY USE OR DISCLOSURE WITHOUT THE CONSENT OF VALMONT INDUSTRIES IS STRICTLY PROHIBITED.

DESCRIPTION  
 ONE SECTOR HEAVY 5 FRAME AND  
 SELF-SUPPORT / GUYED TOWER  
 ATTACHMENT HDW. NO MOUNTING PIPES

CPD NO.	DRAWN BY CEK 9/19/2016	ENG. APPROVAL
CLASS 81	SUB 02	DRAWING USAGE CUSTOMER
	CHECKED BY BMC 10/17/2016	



Locations:  
 New York, NY  
 Atlanta, GA  
 Los Angeles, CA  
 Plymouth, IN  
 Salem, OR  
 Dallas, TX

Engineering  
 Support Team:  
 1-888-753-7446

A valmont COMPANY

PART NO.	VFA10-RRU1W4NP
DWG. NO.	VFA10-RRU1W4NP