

PARTS LIST						
ITEM	QTY	PART NO.	PART DESCRIPTION	LENGTH	UNIT WT.	NET WT.
1	6	X-LWRM	RING MOUNT WELDMENT		68.81	412.85
3	3	X-RMBPBC	RING MOUNT BENT PLATE BOTTOM CONNECTION	12 in	14.80	44.41
4	6	X-233792	PIVOT PLATE	11 1/16 in	9.09	54.54
5	6	X-233791	SUPPORT ARM		80.39	482.35
6	24	SCX1	CROSSOVER PLATE 2-3/8" X 2-3/8"	6 in	3.71	89.00
7	3	P284	2-3/8" X 84" SCH 40 GALVANIZED PIPE	84 in	26.91	80.74
8	6	P2126	2-3/8" OD X 126" SCH 40 GALVANIZED PIPE	126 in	40.75	244.51
9	6	X-127594	FLAT DISK CLAMP PLATE 4" CENTERS (GALV.)		2.48	14.90
10	12	X-100064	CLAMP (4" V-CLAMP) GALVANIZED		0.91	10.95
11	6	A34214	3/4"-10 X 2-1/4" A325 BOLT	2 1/4 in	0.47	2.84
12	6	G34LW	3/4" HDG LOCKWASHER		0.04	0.26
13	6	G34NUT	3/4" HDG HEAVY 2H HEX NUT		0.21	1.27
14	18	G58R-48	5/8" x 48" THREADED ROD (HDG.)	48 in	0.40	7.18
15	24	A58134	5/8" X 1-3/4" HDG A325 BOLT	1 3/4 in	0.27	6.45
16	60	G58LW	5/8" HDG LOCKWASHER		0.03	1.57
17	60	G58NUT	5/8" HDG HEAVY 2H HEX NUT		0.13	7.79
18	108	X-UB1212	1/2" X 2-1/2" X 4-1/2" X 2" GALV. U-BOLT		0.66	70.89
19	24	G1204	1/2" x 4" HDG HEX BOLT GR5 FULL THREAD	4 in	0.27	6.48
20	24	G1202	1/2" x 2" HDG HEX BOLT GR5	2 in	0.18	4.22
21	264	G12FW	1/2" HDG USS FLATWASHER	3/32 in	0.03	9.00
22	264	G12LW	1/2" HDG LOCKWASHER	1/8 in	0.01	3.67
23	264	G12NUT	1/2" HDG HEAVY 2H HEX NUT		0.07	18.91
52	3	X-RMBPTC	RING MOUNT BENT PLATE TOP CONNECTION	13 in	14.80	44.41
					TOTAL WT. #	1687.28

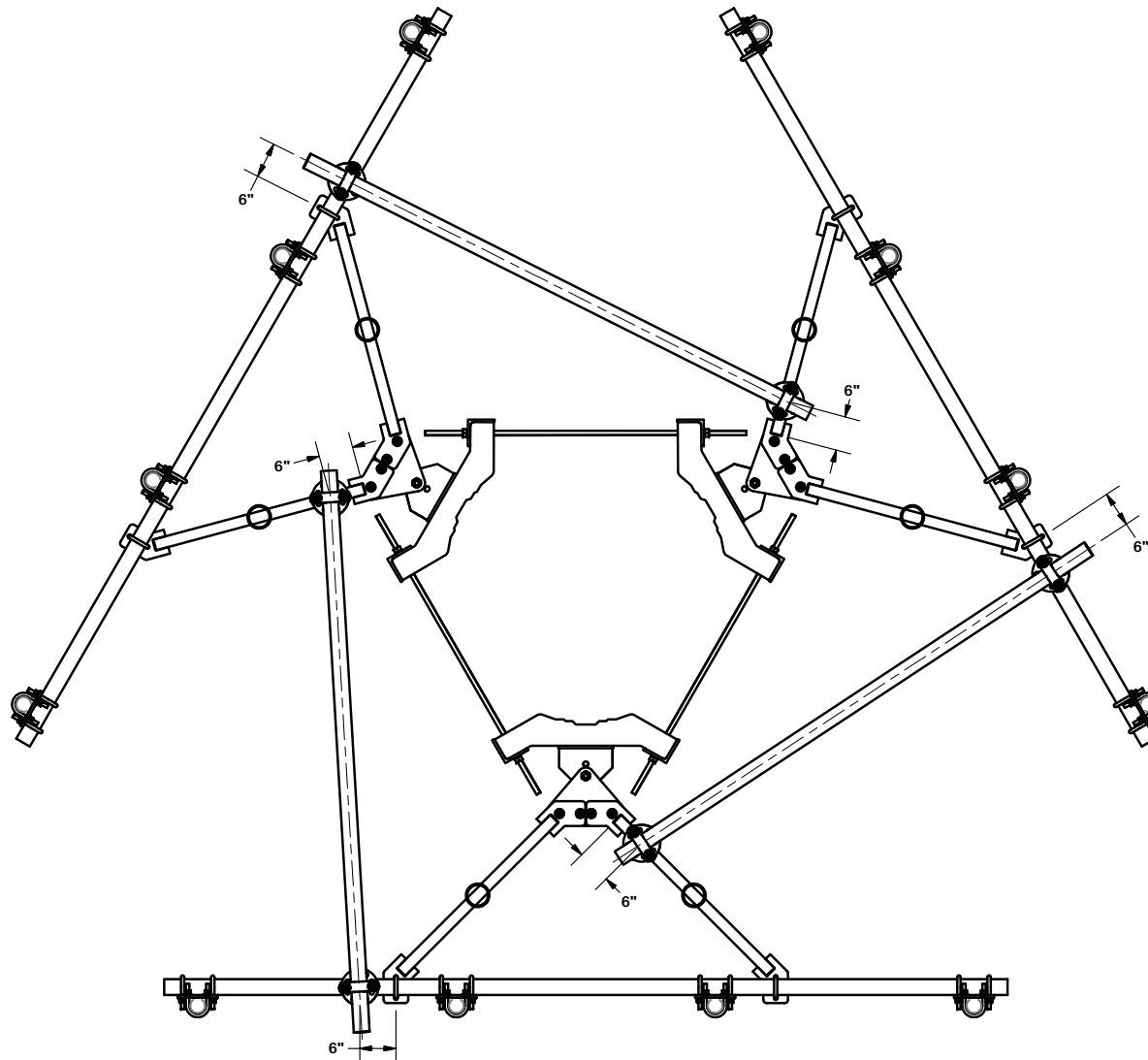
ANT 15995

TOLERANCE NOTES
 TOLERANCES ON DIMENSIONS, UNLESS OTHERWISE NOTED ARE:
 SAWED, SHEARED AND GAS CUT EDGES ($\pm 0.030"$)
 DRILLED AND GAS CUT HOLES ($\pm 0.030"$) - NO CONING OF HOLES
 LASER CUT EDGES AND HOLES ($\pm 0.010"$) - NO CONING OF HOLES
 BENDS ARE $\pm 1/2$ DEGREE
 ALL OTHER MACHINING ($\pm 0.030"$)
 ALL OTHER ASSEMBLY ($\pm 0.060"$)

PROPRIETARY NOTE:
 THE DATA AND TECHNIQUES CONTAINED IN THIS DRAWING ARE PROPRIETARY INFORMATION OF VALMONT INDUSTRIES AND CONSIDERED A TRADE SECRET. ANY USE OR DISCLOSURE WITHOUT THE CONSENT OF VALMONT INDUSTRIES IS STRICTLY PROHIBITED.

DESCRIPTION THREE SECTORS HEAVY 5 FRAME AND MONOPOLE ATTACHMENT HARDWARE NO MOUNTING PIPES		
CPD NO.	DRAWN BY CEK 9/14/2016	ENG. APPROVAL
CLASS 81	SUB 02	DRAWING USAGE CUSTOMER
		CHECKED BY BMC 10/17/2016

 A valmont COMPANY	Locations: New York, NY Atlanta, GA Los Angeles, CA Plymouth, IN Salem, OR Dallas, TX		
	Engineering Support Team: 1-888-753-7446		
PART NO.	VFA10-RRU3L4NP	PAGE	1 OF 4
DWG. NO.	VFA10-RRU3L4NP		



ANT 15995

TOLERANCE NOTES

TOLERANCES ON DIMENSIONS, UNLESS OTHERWISE NOTED ARE:
 SAWED, SHEARED AND GAS CUT EDGES ($\pm 0.030"$)
 DRILLED AND GAS CUT HOLES ($\pm 0.030"$) - NO CONING OF HOLES
 LASER CUT EDGES AND HOLES ($\pm 0.010"$) - NO CONING OF HOLES
 BENDS ARE $\pm 1/2$ DEGREE
 ALL OTHER MACHINING ($\pm 0.030"$)
 ALL OTHER ASSEMBLY ($\pm 0.060"$)

PROPRIETARY NOTE:
 THE DATA AND TECHNIQUES CONTAINED IN THIS DRAWING ARE PROPRIETARY INFORMATION OF VALMONT INDUSTRIES AND CONSIDERED A TRADE SECRET. ANY USE OR DISCLOSURE WITHOUT THE CONSENT OF VALMONT INDUSTRIES IS STRICTLY PROHIBITED.

DESCRIPTION
 THREE SECTORS HEAVY 5 FRAME AND
 MONOPOLE ATTACHMENT HARDWARE
 NO MOUNTING PIPES

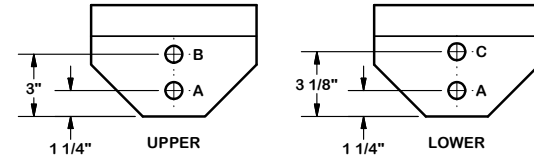
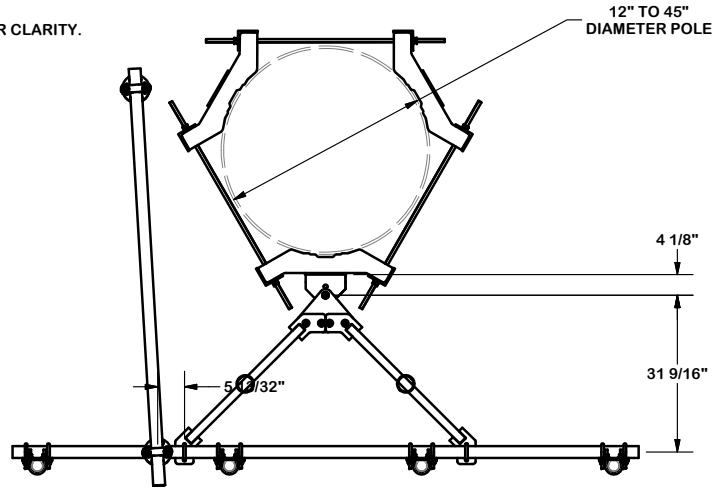


Locations:
 New York, NY
 Atlanta, GA
 Los Angeles, CA
 Plymouth, IN
 Salem, OR
 Dallas, TX
 Engineering
 Support Team:
 1-888-753-7446

CPD NO.	DRAWN BY	ENG. APPROVAL
	CEK 9/14/2016	
CLASS	SUB	DRAWING USAGE
81	02	CUSTOMER
	CHECKED BY	
	BMC 10/17/2016	

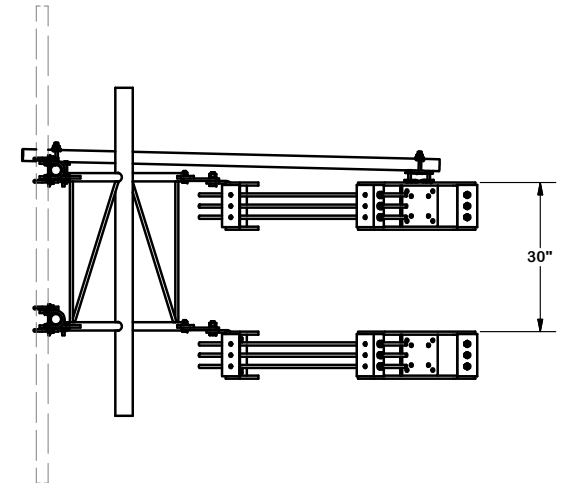
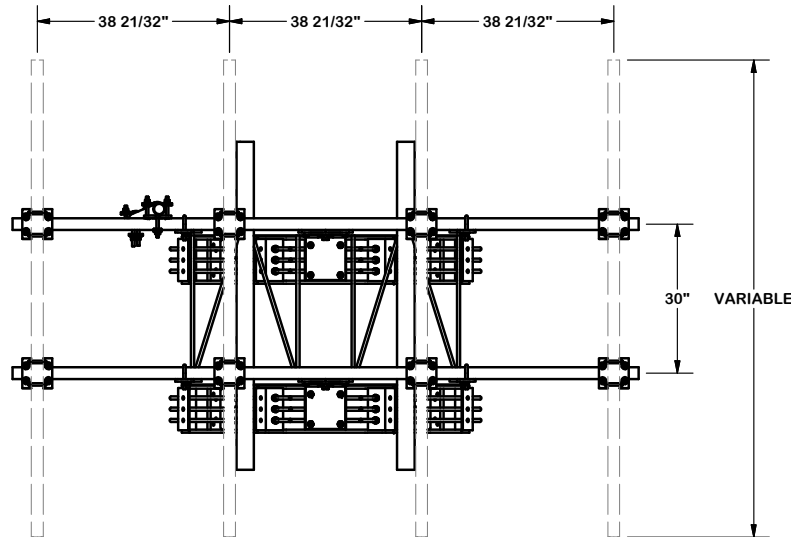
PART NO.	VFA10-RRU3L4NP
DWG. NO.	VFA10-RRU3L4NP

NOTE:
OTHER SECTORS REMOVED FOR CLARITY.



NOTES:

1. USE HOLE "A" IN UPPER AND LOWER BRACKETS FOR STRAIGHT LEGS.
2. USE HOLE "A" IN UPPER BRACKET AND HOLE "C" IN LOWER BRACKET FOR 3°.
3. USE HOLE "B" IN UPPER BRACKET AND HOLE "C" IN LOWER BRACKET FOR 0.2°.



ANT 15995

TOLERANCE NOTES

TOLERANCES ON DIMENSIONS, UNLESS OTHERWISE NOTED ARE:
 SAWED, SHEARED AND GAS CUT EDGES (± 0.030 ")
 DRILLED AND GAS CUT HOLES (± 0.030 ") - NO CONING OF HOLES
 LASER CUT EDGES AND HOLES (± 0.010 ") - NO CONING OF HOLES
 BENDS ARE $\pm 1/2$ DEGREE
 ALL OTHER MACHINING (± 0.030 ")
 ALL OTHER ASSEMBLY (± 0.060 ")

PROPRIETARY NOTE:
 THE DATA AND TECHNIQUES CONTAINED IN THIS DRAWING ARE PROPRIETARY INFORMATION OF VALMONT INDUSTRIES AND CONSIDERED A TRADE SECRET. ANY USE OR DISCLOSURE WITHOUT THE CONSENT OF VALMONT INDUSTRIES IS STRICTLY PROHIBITED.

DESCRIPTION
 THREE SECTORS HEAVY 5 FRAME AND
 MONOPOLE ATTACHMENT HARDWARE
 NO MOUNTING PIPES



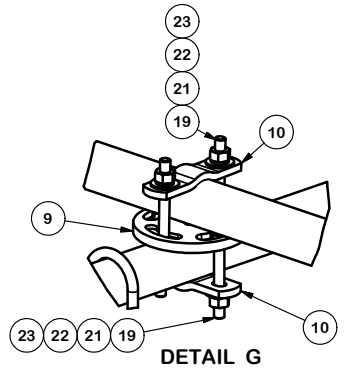
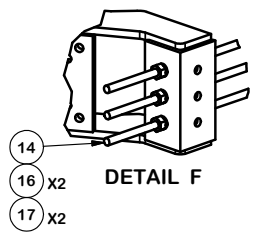
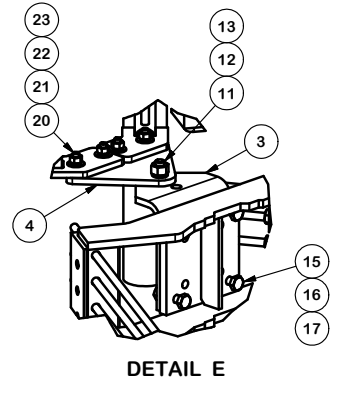
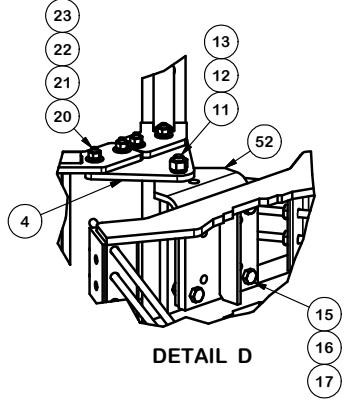
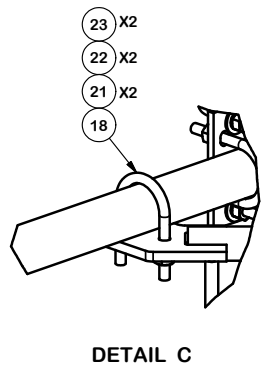
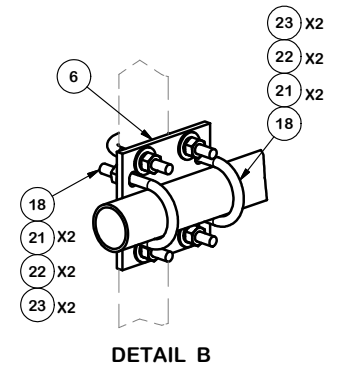
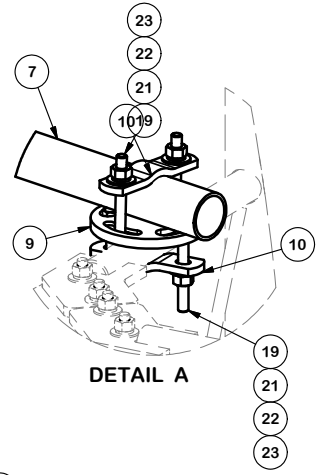
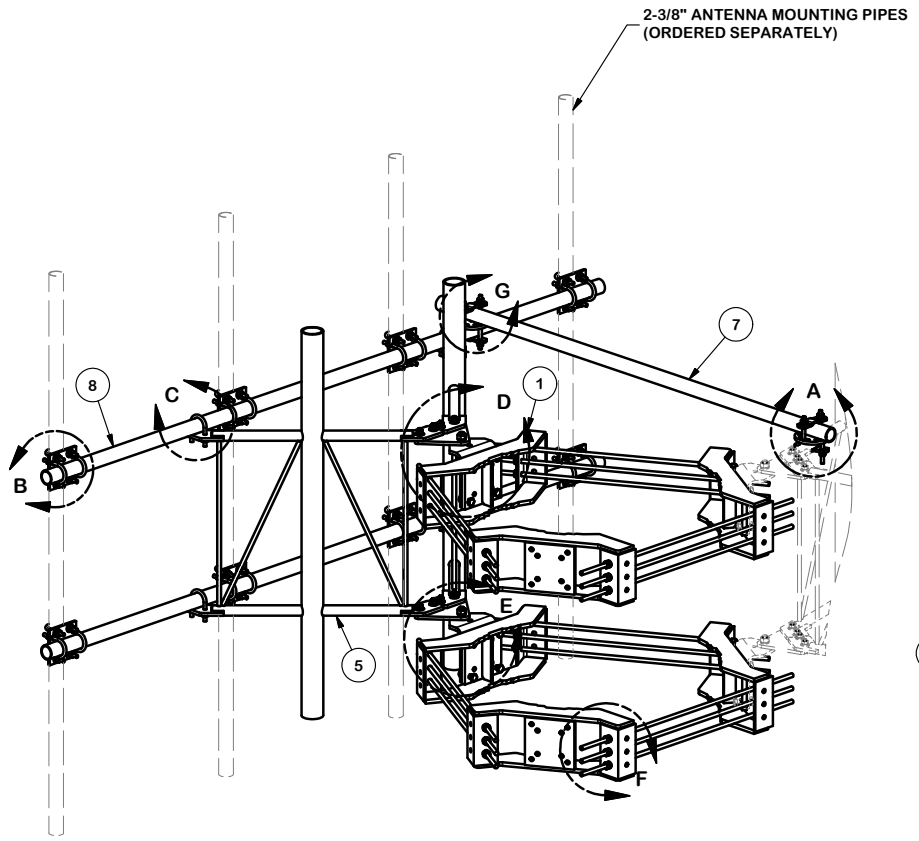
Engineering
 Support Team:
 1-888-753-7446

Locations:
 New York, NY
 Atlanta, GA
 Los Angeles, CA
 Plymouth, IN
 Salem, OR
 Dallas, TX

CPD NO.	DRAWN BY CEK 9/14/2016	ENG. APPROVAL
CLASS 81	SUB 02	DRAWING USAGE CUSTOMER
	CHECKED BY BMC 10/17/2016	

PART NO.	VFA10-RRU3L4NP	PAGE 3 OF 4
DWG. NO.	VFA10-RRU3L4NP	

NOTE:
OTHER SECTORS REMOVED FOR CLARITY.



ANT 15995

TOLERANCE NOTES
TOLERANCES ON DIMENSIONS, UNLESS OTHERWISE NOTED ARE:
SAWED, SHEARED AND GAS CUT EDGES (± 0.030 ")
DRILLED AND GAS CUT HOLES (± 0.030 ") - NO CONING OF HOLES
LASER CUT EDGES AND HOLES (± 0.010 ") - NO CONING OF HOLES
BENDS ARE $\pm 1/2$ DEGREE
ALL OTHER MACHINING (± 0.030 ")
ALL OTHER ASSEMBLY (± 0.060 ")

PROPRIETARY NOTE:
THE DATA AND TECHNIQUES CONTAINED IN THIS DRAWING ARE PROPRIETARY INFORMATION OF VALMONT INDUSTRIES AND CONSIDERED A TRADE SECRET. ANY USE OR DISCLOSURE WITHOUT THE CONSENT OF VALMONT INDUSTRIES IS STRICTLY PROHIBITED.

CPD NO.		DRAWN BY CEK 9/14/2016		ENG. APPROVAL	
CLASS	SUB	DRAWING USAGE		CHECKED BY	
81	02	CUSTOMER		BMC 10/17/2016	

 A valmont COMPANY	Locations: New York, NY Atlanta, GA Los Angeles, CA Plymouth, IN Salem, OR Dallas, TX		
	Engineering Support Team: 1-888-753-7446		
PART NO.	VFA10-RRU3L4NP	PAGE	4 OF 4
DWG. NO.	VFA10-RRU3L4NP		