

PARTS LIST						
ITEM	QTY	PART NO.	PART DESCRIPTION	LENGTH	UNIT WT.	NET WT.
1	3	X-192043	UPPER MOUNTING BRACKET FOR V-FRAME		8.73	26.18
2	3	X-192044	LOWER MOUNTING BRACKET FOR V-FRAME		8.73	26.18
3	12	X-158320	ANGLE CLAMP	16 1/2 in	8.51	102.08
4	12	X-126501	BRACKET ANGLE LEG MOUNTING	16 1/2 in	7.13	85.54
5	6	X-159999	BACKING PLATE	6 9/16 in	5.73	34.39
6	6	X-233792	PIVOT PLATE	11 1/16 in	9.09	54.54
7	6	X-233791	SUPPORT ARM		80.39	482.35
8	24	SCX1	CROSSOVER PLATE 2-3/8" X 2-3/8"	6 in	3.71	89.00
9	24	X-124312	1/2" X 2" X 2" ANGLE SPACER; WITH 9/16" HOLE	2 in	0.53	12.78
10	9	P2126	2-3/8" OD X 126" SCH 40 GALVANIZED PIPE	126 in	40.75	366.77
11	6	X-127594	FLAT DISK CLAMP PLATE 4" CENTERS (GALV.)		2.48	14.90
12	12	X-100064	CLAMP (4" V-CLAMP) GALVANIZED		0.91	10.95
13	6	A34214	3/4"-10 X 2-1/4" A325 BOLT	2 1/4 in	0.47	2.84
14	6	G34LW	3/4" HDG LOCKWASHER		0.04	0.26
15	6	G34NUT	3/4" HDG HEAVY 2H HEX NUT		0.21	1.27
16	24	G12R-20	1/2" x 20" GALV. THREADED ROD		1.12	26.76
17	24	G1203	1/2" x 3" HDG HEX BOLT GR5 FULL THREAD	3 in	0.22	5.21
18	30	G12065	1/2" x 6-1/2" HDG HEX BOLT GR5 FULL THREAD	6 1/2 in	0.41	12.28
19	108	X-UB1212	1/2" X 2-1/2" X 4-1/2" X 2" GALV. U-BOLT		0.66	70.89
20	18	G1204	1/2" x 4" HDG HEX BOLT GR5 FULL THREAD	4 in	0.27	4.86
21	24	G1202	1/2" x 2" HDG HEX BOLT GR5	2 in	0.18	4.22
22	360	G12FW	1/2" HDG USS FLATWASHER	3/32 in	0.03	12.27
23	360	G12LW	1/2" HDG LOCKWASHER	1/8 in	0.01	5.01
24	360	G12NUT	1/2" HDG HEAVY 2H HEX NUT		0.07	25.79
					TOTAL WT. #	1477.32

ANT 15998

TOLERANCE NOTES

TOLERANCES ON DIMENSIONS, UNLESS OTHERWISE NOTED ARE:
 SAWED, SHEARED AND GAS CUT EDGES ($\pm 0.030"$)
 DRILLED AND GAS CUT HOLES ($\pm 0.030"$) - NO CONING OF HOLES
 LASER CUT EDGES AND HOLES ($\pm 0.010"$) - NO CONING OF HOLES
 BENDS ARE $\pm 1/2$ DEGREE
 ALL OTHER MACHINING ($\pm 0.030"$)
 ALL OTHER ASSEMBLY ($\pm 0.060"$)

PROPRIETARY NOTE:
 THE DATA AND TECHNIQUES CONTAINED IN THIS DRAWING ARE PROPRIETARY INFORMATION OF VALMONT INDUSTRIES AND CONSIDERED A TRADE SECRET. ANY USE OR DISCLOSURE WITHOUT THE CONSENT OF VALMONT INDUSTRIES IS STRICTLY PROHIBITED.

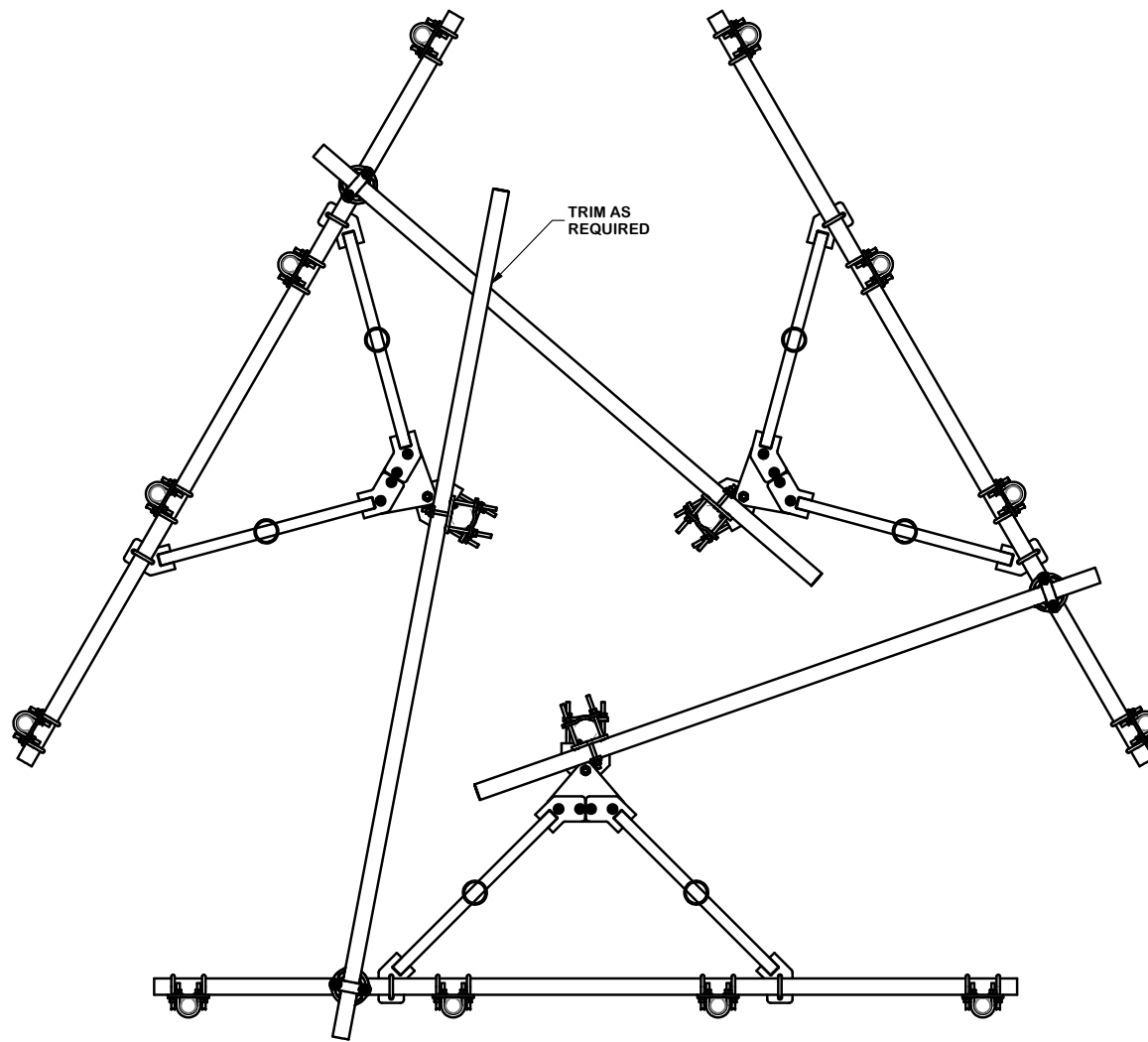
DESCRIPTION
 THREE SECTORS HEAVY 5 FRAME AND
 SELF-SUPPORT / GUYED TOWER
 ATTACHMENT HDW, NO MOUNTING PIPES



Locations:
 New York, NY
 Atlanta, GA
 Los Angeles, CA
 Plymouth, IN
 Salem, OR
 Dallas, TX
 Engineering Support Team:
 1-888-753-7446

CPD NO.	DRAWN BY	ENG. APPROVAL
	CEK 9/19/2016	
CLASS	DRAWING USAGE	CHECKED BY
81	CUSTOMER	BMC 10/17/2016

PART NO.	VFA10-RRU3W4NP
DWG. NO.	VFA10-RRU3W4NP



ANT 15998

TOLERANCE NOTES
 TOLERANCES ON DIMENSIONS, UNLESS OTHERWISE NOTED ARE:
 SAWED, SHEARED AND GAS CUT EDGES ($\pm 0.030"$)
 DRILLED AND GAS CUT HOLES ($\pm 0.030"$) - NO CONING OF HOLES
 LASER CUT EDGES AND HOLES ($\pm 0.010"$) - NO CONING OF HOLES
 BENDS ARE $\pm 1/2$ DEGREE
 ALL OTHER MACHINING ($\pm 0.030"$)
 ALL OTHER ASSEMBLY ($\pm 0.060"$)

PROPRIETARY NOTE:
 THE DATA AND TECHNIQUES CONTAINED IN THIS DRAWING ARE PROPRIETARY INFORMATION OF VALMONT INDUSTRIES AND CONSIDERED A TRADE SECRET. ANY USE OR DISCLOSURE WITHOUT THE CONSENT OF VALMONT INDUSTRIES IS STRICTLY PROHIBITED.

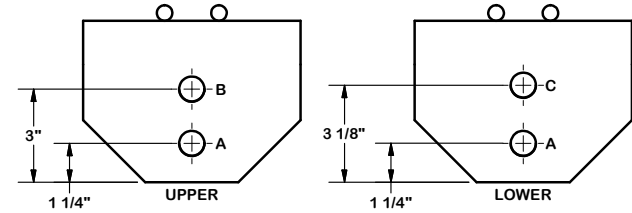
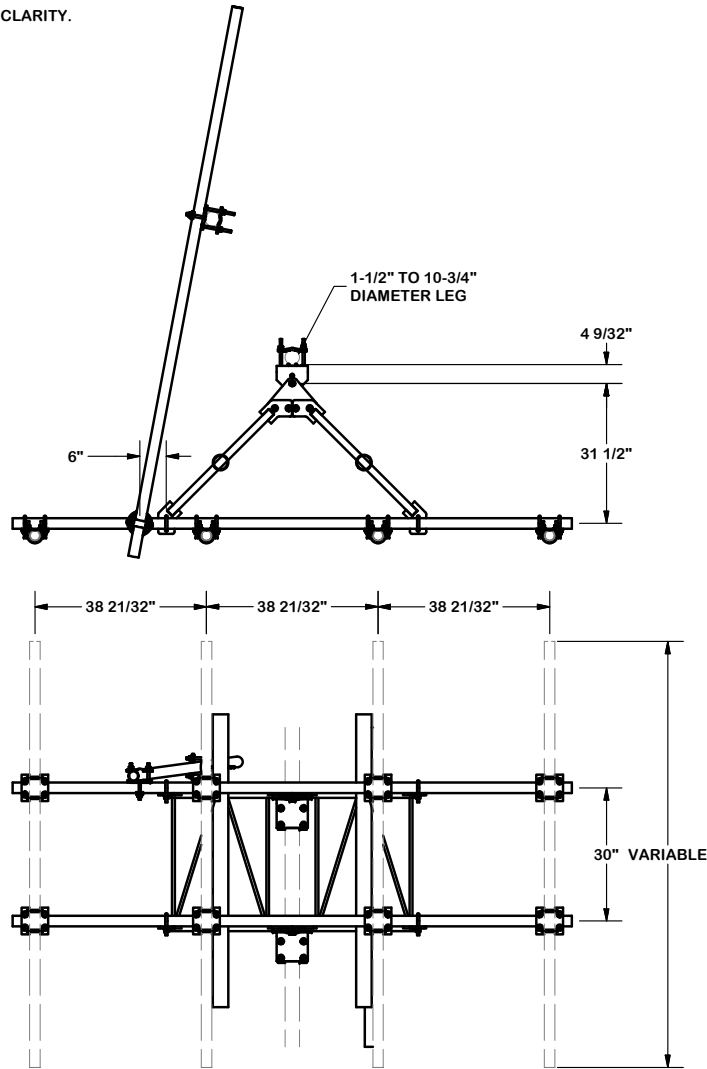
DESCRIPTION
 THREE SECTORS HEAVY 5 FRAME AND
 SELF-SUPPORT / GUYED TOWER
 ATTACHMENT HDW, NO MOUNTING PIPES

	Engineering Support Team: 1-888-753-7446	Locations: New York, NY Atlanta, GA Los Angeles, CA Plymouth, IN Salem, OR Dallas, TX
	A valmont COMPANY	

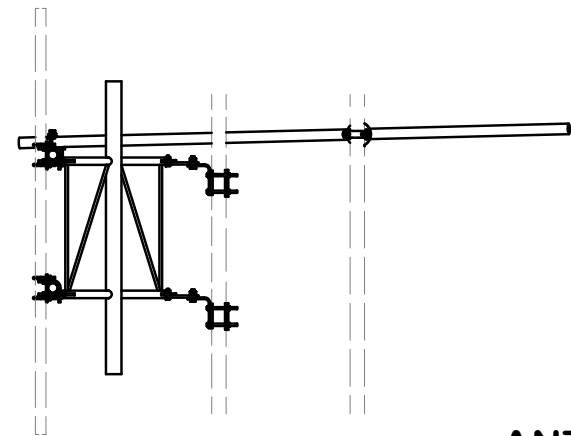
CPD NO.	DRAWN BY CEK 9/19/2016	ENG. APPROVAL
CLASS 81	SUB 02	DRAWING USAGE CUSTOMER
		CHECKED BY BMC 10/17/2016

PART NO.	VFA10-RRU3W4NP	PAGE 2 OF 4
DWG. NO.	VFA10-RRU3W4NP	

NOTE:
OTHER SECTORS REMOVED FOR CLARITY.



- NOTES:
1. USE HOLE "A" IN UPPER AND LOWER BRACKETS FOR STRAIGHT LEGS.
 2. USE HOLE "A" IN UPPER BRACKET AND HOLE "C" IN LOWER BRACKET FOR 2" IN 20' TAPER LEGS (3.309°)
 3. USE HOLE "B" IN UPPER BRACKET AND HOLE "C" IN LOWER BRACKET FOR 6" IN 20' TAPER LEGS. (0.827°)



ANT 15998

TOLERANCE NOTES

TOLERANCES ON DIMENSIONS, UNLESS OTHERWISE NOTED ARE:
 SAWED, SHEARED AND GAS CUT EDGES ($\pm 0.030"$)
 DRILLED AND GAS CUT HOLES ($\pm 0.030"$) - NO CONING OF HOLES
 LASER CUT EDGES AND HOLES ($\pm 0.010"$) - NO CONING OF HOLES
 BENDS ARE $\pm 1/2$ DEGREE
 ALL OTHER MACHINING ($\pm 0.030"$)
 ALL OTHER ASSEMBLY ($\pm 0.060"$)

PROPRIETARY NOTE:
 THE DATA AND TECHNIQUES CONTAINED IN THIS DRAWING ARE PROPRIETARY INFORMATION OF VALMONT INDUSTRIES AND CONSIDERED A TRADE SECRET. ANY USE OR DISCLOSURE WITHOUT THE CONSENT OF VALMONT INDUSTRIES IS STRICTLY PROHIBITED.

DESCRIPTION
 THREE SECTORS HEAVY 5 FRAME AND
 SELF-SUPPORT / GUYED TOWER
 ATTACHMENT HDW, NO MOUNTING PIPES



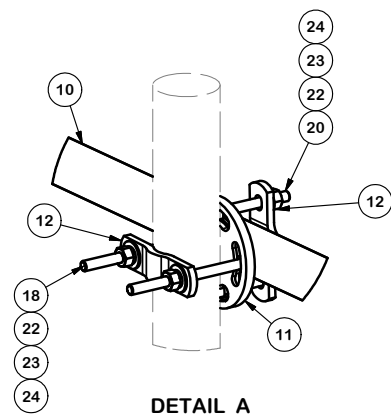
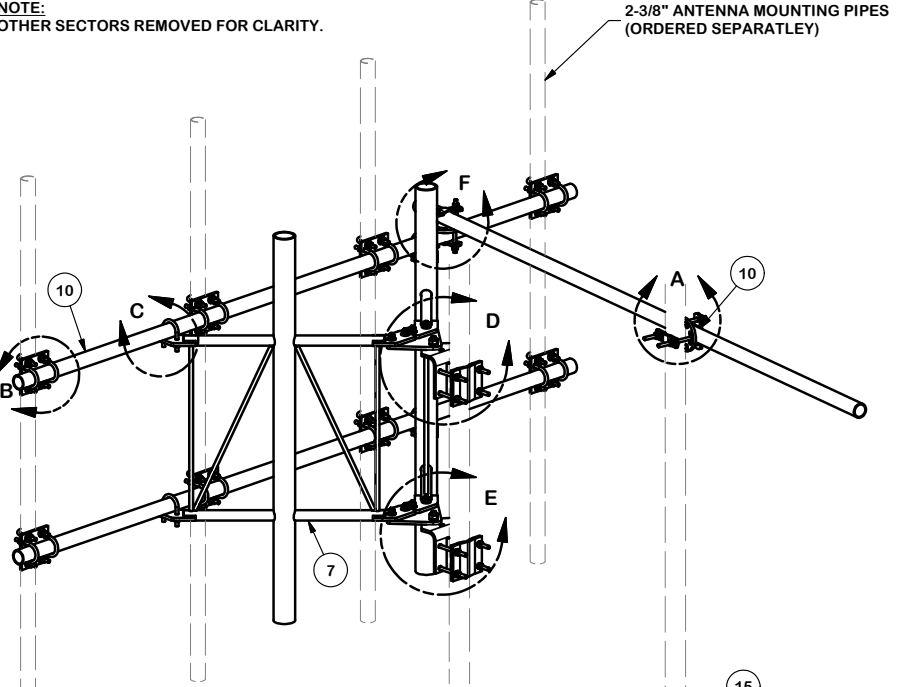
Locations:
 New York, NY
 Atlanta, GA
 Los Angeles, CA
 Plymouth, IN
 Salem, OR
 Dallas, TX

Engineering
 Support Team:
 1-888-753-7446

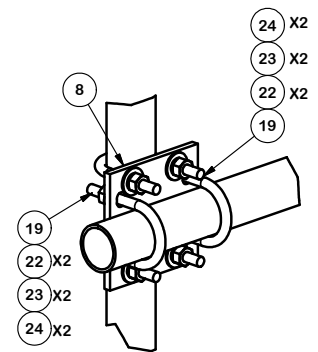
CPD NO.	DRAWN BY	ENG. APPROVAL
81	CEK 9/19/2016	
CLASS	DRAWING USAGE	CHECKED BY
81	CUSTOMER	BMC 10/17/2016

PART NO.	VFA10-RRU3W4NP
DWG. NO.	VFA10-RRU3W4NP

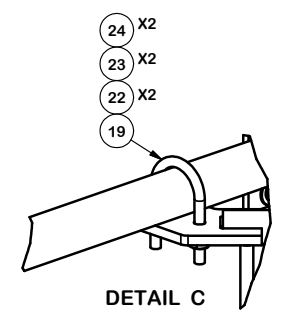
NOTE:
OTHER SECTORS REMOVED FOR CLARITY.



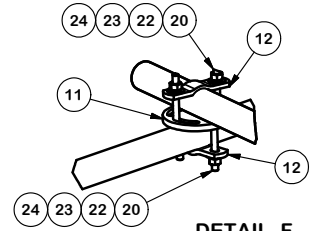
DETAIL A



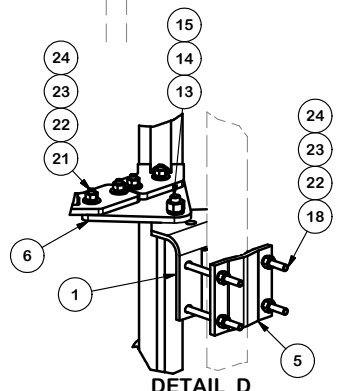
DETAIL B



DETAIL C

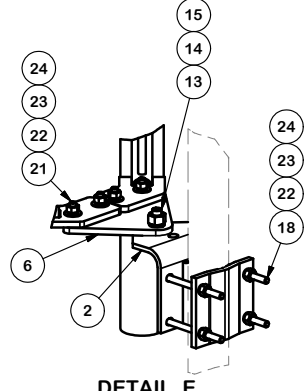


DETAIL F



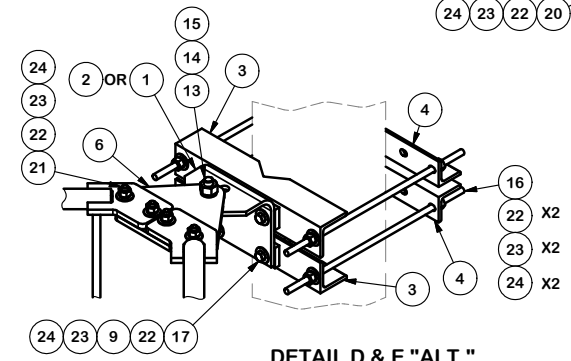
DETAIL D

FOR 1-1/2" TO 4-1/2"
TOWER LEGS



DETAIL E

FOR 1-1/2" TO 4-1/2"
TOWER LEGS



DETAIL D & E "ALT."

FOR 1-1/2" TO 10-3/4"
TOWER LEGS

ANT 15998

TOLERANCE NOTES

TOLERANCES ON DIMENSIONS, UNLESS OTHERWISE NOTED ARE:
 SAWED, SHEARED AND GAS CUT EDGES ($\pm 0.030"$)
 DRILLED AND GAS CUT HOLES ($\pm 0.030"$) - NO CONING OF HOLES
 LASER CUT EDGES AND HOLES ($\pm 0.010"$) - NO CONING OF HOLES
 BENDS ARE $\pm 1/2$ DEGREE
 ALL OTHER MACHINING ($\pm 0.030"$)
 ALL OTHER ASSEMBLY ($\pm 0.060"$)

PROPRIETARY NOTE:
 THE DATA AND TECHNIQUES CONTAINED IN THIS DRAWING ARE PROPRIETARY INFORMATION OF VALMONT INDUSTRIES AND CONSIDERED A TRADE SECRET. ANY USE OR DISCLOSURE WITHOUT THE CONSENT OF VALMONT INDUSTRIES IS STRICTLY PROHIBITED.

DESCRIPTION
 THREE SECTORS HEAVY 5 FRAME AND
 SELF-SUPPORT / GUYED TOWER
 ATTACHMENT HDW, NO MOUNTING PIPES



Locations:
 New York, NY
 Atlanta, GA
 Los Angeles, CA
 Plymouth, IN
 Salem, OR
 Dallas, TX

Engineering Support Team:
 1-888-753-7446

A valmont COMPANY

CPD NO.	DRAWN BY	ENG. APPROVAL
CLASS	DRAWING USAGE	CHECKED BY
81	CUSTOMER	BMC 10/17/2016

PART NO.	VFA10-RRU3W4NP
DWG. NO.	VFA10-RRU3W4NP