

PARTS LIST						
ITEM	QTY	PART NO.	PART DESCRIPTION	LENGTH	UNIT WT.	NET WT.
1	2	X-VFAW	SUPPORT ARM		71.41	142.81
2	1	X-HDCAMTBW	CLAMP WELDMENT FOR BCAM-HD		33.86	33.86
3	1	X-MHTPHD	MULTI-HOLE TAPER PLATE WELDMENT		36.24	36.24
4	1	X-HDCAMSS	ANGLE ADJUSTMENT WELDMENT FOR BCAM-HD		16.39	16.39
5	2	X-VFAPL4	VFA-HD PIVOT PLATE	12 in	15.88	31.77
6	2	X-LCBP4	BENT BACKING PLATE	13 in	19.00	38.01
7	2	X-SPTB	SLIDING PIPE TIE BACK PLATE	5 1/2 in	5.87	11.74
8	1	X-HDCAMSP	POSITIONING PLATE WELDMENT FOR BCAM-HD		2.58	2.58
9	2	X-TBCA	TIE BACK CLIP ANGLE		2.01	4.01
10	8	SCX2	CROSSOVER PLATE	7 in	4.80	38.37
11	2	MCP	CLAMP HALF 1/2" THICK, 11-5/8" LONG	12 1/16 in	3.59	7.19
12	4	DCP	1/2" THICK, 5-3/4" CNTER TO CENTER CLAMP HALF	8 1/8 in	2.36	9.45
13	2	P30150	2-7/8" X 150" (2-1/2" SCH. 40) GALVANIZED PIPE	150 in	76.94	153.87
14	1	P2126	2-3/8" X 126" (2" SCH. 40) GALVANIZED PIPE	126 in	40.75	40.75
15	4	P2120	2-3/8" X 120" (2" SCH. 40) GALVANIZED PIPE	120 in	38.81	155.25
16	4	A34212	3/4" X 2-1/2" UNC HEX BOLT (A325)	2 1/2 in	0.48	1.92
17	4	G34FW	3/4" HDG USS FLATWASHER		0.06	0.24
18	4	G34LW	3/4" HDG LOCKWASHER		0.04	0.17
19	4	G34NUT	3/4" HDG HEAVY 2H HEX NUT		0.21	0.85
20	8	G58R-18	5/8" X 18" THREADED ROD (HDG.)	18 in	0.40	3.19
21	2	G58R-12	5/8" X 12" THREADED ROD (HDG.)		1.05	2.09
22	2	G58R-8	5/8" X 8" THREADED ROD (HDG.)		0.70	1.39
23	4	X-UB5300	5/8" X 3" X 5-1/4" X 2-1/2" U-BOLT (HDG.)		1.15	4.60
24	4	X-UB5258	5/8" X 2-5/8" X 4-1/2" X 2" U-BOLT (HDG.)		1.00	4.00
25	2	G5807	5/8" X 7" HDG HEX BOLT GR5 FULL THREAD	7 in	0.70	1.41
26	1	G5806	5/8" X 6" HDG HEX BOLT GR5 FULL THREAD	6 in	0.62	0.62
27	4	G5804	5/8" X 4" HDG HEX BOLT GR5		0.44	1.78
28	8	A582114	5/8" X 2-1/4" HDG A325 HEX BOLT	2 1/4 in	0.31	2.50
29	2	G5802	5/8" X 2" HDG HEX BOLT GR5		0.27	0.54
30	15	G58FW	5/8" HDG USS FLATWASHER	1/8 in	0.07	1.06
31	50	G58LW	5/8" HDG LOCKWASHER		0.03	1.30
32	53	G58NUT	5/8" HDG HEAVY 2H HEX NUT		0.13	6.88
33	32	X-UB1300	1/2" X 3" X 5" X 2" GALV U-BOLT		0.74	23.64
34	16	X-UB1212	1/2" X 2" X 3" X 1-1/4" U-BOLT (HDG.)		0.60	9.56
35	64	G12FW	1/2" HDG USS FLATWASHER	3/32 in	0.03	2.18
36	64	G12LW	1/2" HDG LOCKWASHER	1/8 in	0.01	0.89
37	64	G12NUT	1/2" HDG HEAVY 2H HEX NUT		0.07	4.58
					TOTAL WT. #	773.39

TOLERANCE NOTES

TOLERANCES ON DIMENSIONS, UNLESS OTHERWISE NOTED ARE:
 SAWED, SHEARED AND GAS CUT EDGES ($\pm 0.030"$)
 DRILLED AND GAS CUT HOLES ($\pm 0.030"$) - NO CONING OF HOLES
 LASER CUT EDGES AND HOLES ($\pm 0.010"$) - NO CONING OF HOLES
 BENDS ARE $\pm 1/2$ DEGREE
 ALL OTHER MACHINING ($\pm 0.030"$)
 ALL OTHER ASSEMBLY ($\pm 0.060"$)

PROPRIETARY NOTE:
 THE DATA AND TECHNIQUES CONTAINED IN THIS DRAWING ARE PROPRIETARY INFORMATION OF VALMONT INDUSTRIES AND CONSIDERED A TRADE SECRET. ANY USE OR DISCLOSURE WITHOUT THE CONSENT OF VALMONT INDUSTRIES IS STRICTLY PROHIBITED.

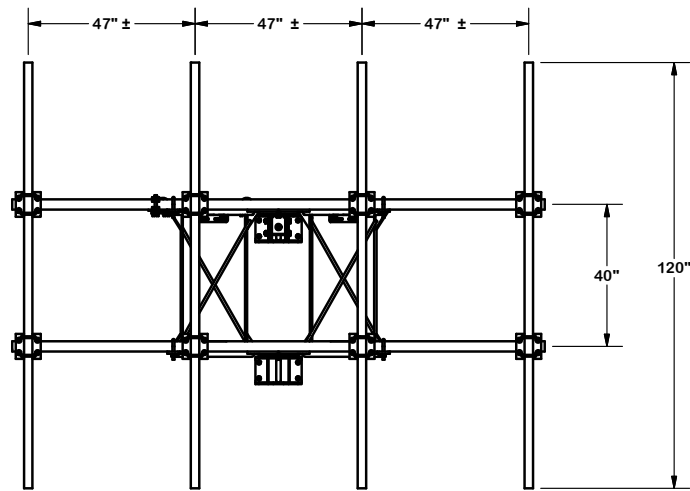
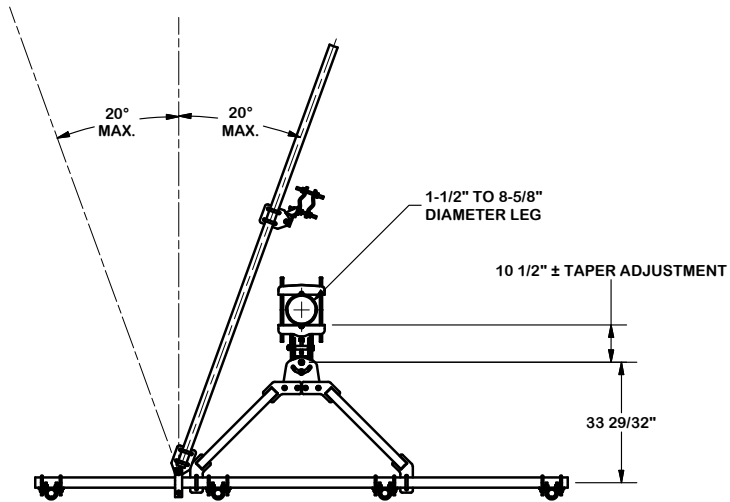
DESCRIPTION
 12' 6" HEAVY DUTY
 V-FRAME ASSEMBLY
 W/ 1 STIFF ARM &
 MOUNT PIPES

SITE PRO 1
 A valmont COMPANY
 Engineering Support Team:
 1-888-753-7446
 Locations:
 New York, NY
 Atlanta, GA
 Los Angeles, CA
 Plymouth, IN
 Salem, OR
 Dallas, TX

REV	DESCRIPTION OF REVISIONS	CPD	BY	DATE
A	UPDATED BCAM VERSION 1 TO BCAM VERSION 2		CEK	7/2/2018
REVISION HISTORY				

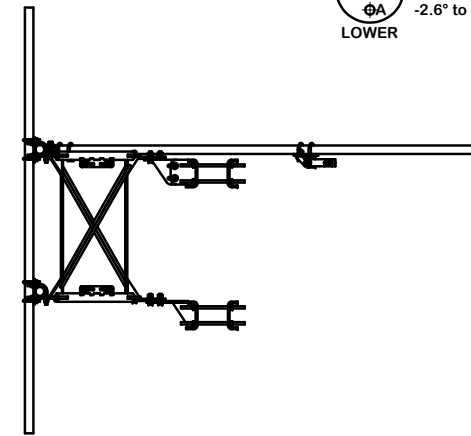
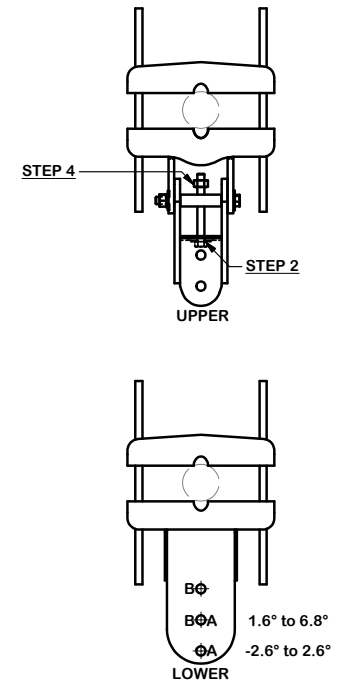
CPD NO.	DRAWN BY	ENG. APPROVAL
SP1	CSL	7/3/2017
CLASS	SUB	DRAWING USAGE
87	02	CUSTOMER
CHECKED BY	DATE	
BMC	5/3/2018	

PART NO.	DWG. NO.
VFA12-H10-2120	VFA12-H10-2120



ANGLE CALIBRATING PROCEDURE:

1. MEASURE TOWER TAPER AND PICK LOWER BRACKET HOLE:
 - HOLE A = -2.6° TO 2.6°
 - HOLE B = 1.6° TO 6.8°
2. USE CALIBRATING BOLT TO ADJUST FRAME TO DESIRED TAPER
3. TORQUE LOCKING BOLTS TO 100 ft.-lbs.
4. ADVANCE LOCKING NUT TO POSITIONING PLATE, THEN TIGHTEN.



TOLERANCE NOTES

TOLERANCES ON DIMENSIONS, UNLESS OTHERWISE NOTED ARE:
 SAWED, SHEARED AND GAS CUT EDGES ($\pm 0.030"$)
 DRILLED AND GAS CUT HOLES ($\pm 0.030"$) - NO CONING OF HOLES
 LASER CUT EDGES AND HOLES ($\pm 0.010"$) - NO CONING OF HOLES
 BENDS ARE $\pm 1/2$ DEGREE
 ALL OTHER MACHINING ($\pm 0.030"$)
 ALL OTHER ASSEMBLY ($\pm 0.060"$)

PROPRIETARY NOTE:
 THE DATA AND TECHNIQUES CONTAINED IN THIS DRAWING ARE PROPRIETARY INFORMATION OF VALMONT INDUSTRIES AND CONSIDERED A TRADE SECRET. ANY USE OR DISCLOSURE WITHOUT THE CONSENT OF VALMONT INDUSTRIES IS STRICTLY PROHIBITED.

DESCRIPTION 12' 6" HEAVY DUTY V-FRAME ASSEMBLY W/ 1 STIFF ARM & MOUNT PIPES

CPD NO. SP1	DRAWN BY CSL	7/3/2017	ENG. APPROVAL
CLASS 87	SUB 02	DRAWING USAGE CUSTOMER	CHECKED BY BMC
			5/3/2018

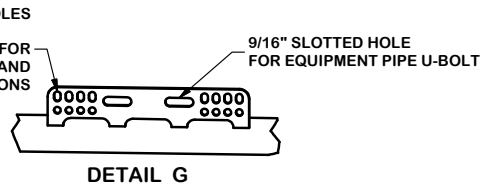
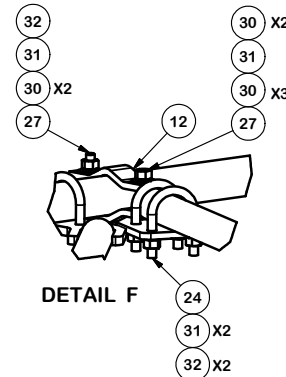
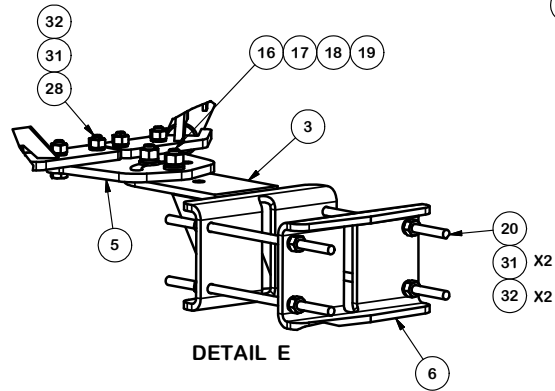
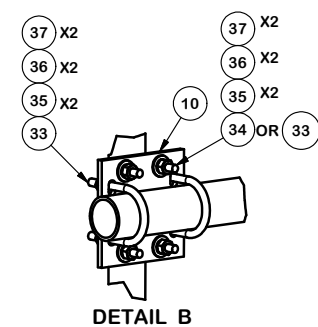
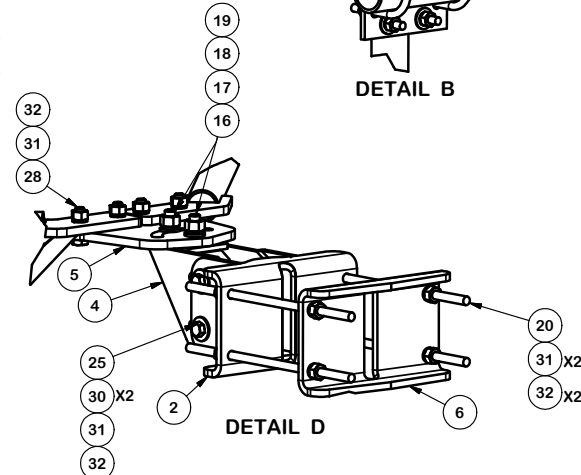
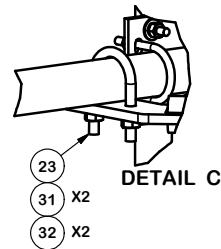
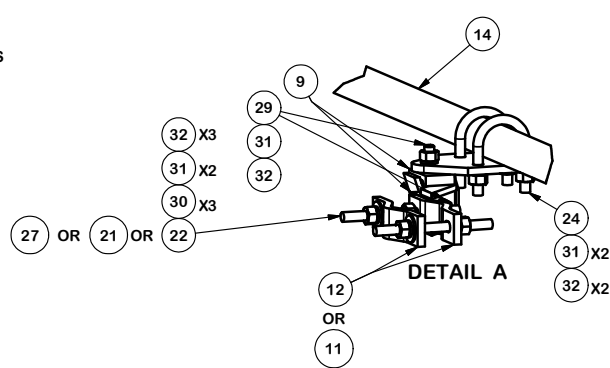
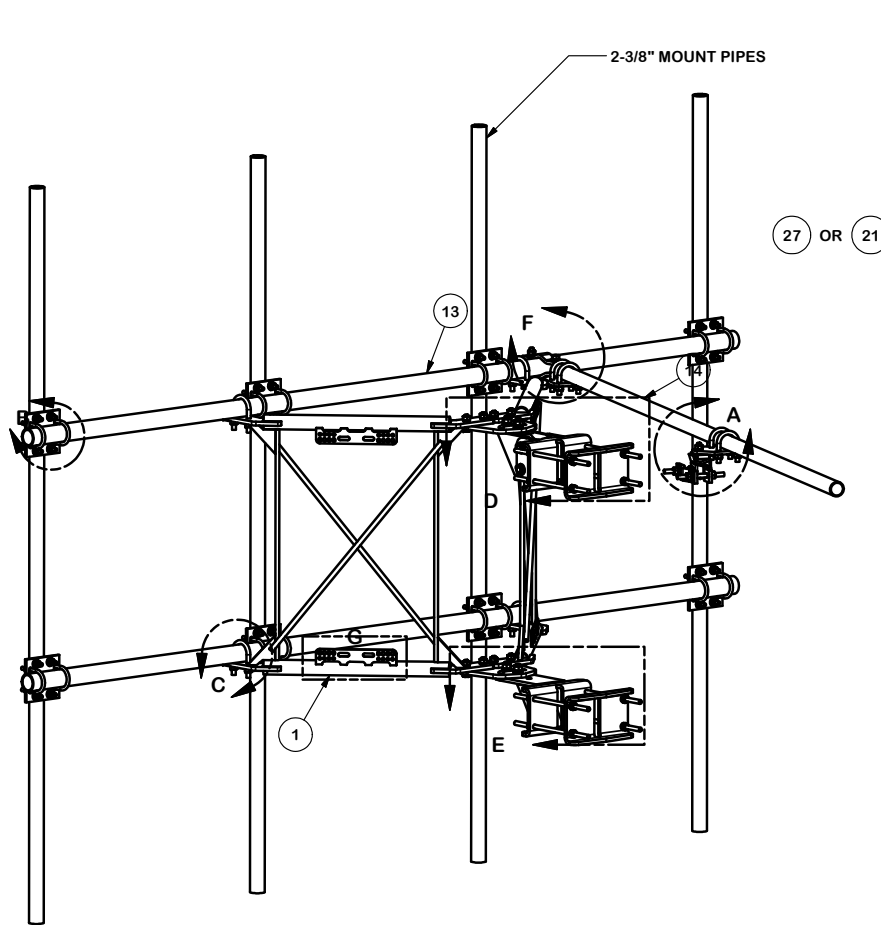


Locations:
 New York, NY
 Atlanta, GA
 Los Angeles, CA
 Plymouth, IN
 Salem, OR
 Dallas, TX

Engineering Support Team:
 1-888-753-7446

PART NO.	VFA12-H10-2120	PAGE	2 OF 4
DWG. NO.	VFA12-H10-2120		

A	UPDATED BCAM VERSION 1 TO BCAM VERSION 2	CEK	7/2/2018
REV	DESCRIPTION OF REVISIONS	CPD	BY
	REVISION HISTORY		DATE



REVIEW CARRIER STANDARDS FOR PROPER SURFACE PREPARATION AND ASSEMBLY OF ELECTRICAL CONNECTIONS

TOLERANCE NOTES

TOLERANCES ON DIMENSIONS, UNLESS OTHERWISE NOTED ARE:
 SAWED, SHEARED AND GAS CUT EDGES (± 0.030)
 DRILLED AND GAS CUT HOLES (± 0.030) - NO CONING OF HOLES
 LASER CUT EDGES AND HOLES (± 0.010) - NO CONING OF HOLES
 BENDS ARE $\pm 1/2$ DEGREE
 ALL OTHER MACHINING (± 0.030)
 ALL OTHER ASSEMBLY (± 0.060)

PROPRIETARY NOTE:
 THE DATA AND TECHNIQUES CONTAINED IN THIS DRAWING ARE PROPRIETARY INFORMATION OF VALMONT INDUSTRIES AND CONSIDERED A TRADE SECRET. ANY USE OR DISCLOSURE WITHOUT THE CONSENT OF VALMONT INDUSTRIES IS STRICTLY PROHIBITED.

DESCRIPTION
12' 6" HEAVY DUTY V-FRAME ASSEMBLY W/ 1 STIFF ARM & MOUNT PIPES

CPD NO. SP1	DRAWN BY CSL	7/3/2017	ENG. APPROVAL
CLASS 87	SUB 02	DRAWING USAGE CUSTOMER	CHECKED BY BMC
			5/3/2018

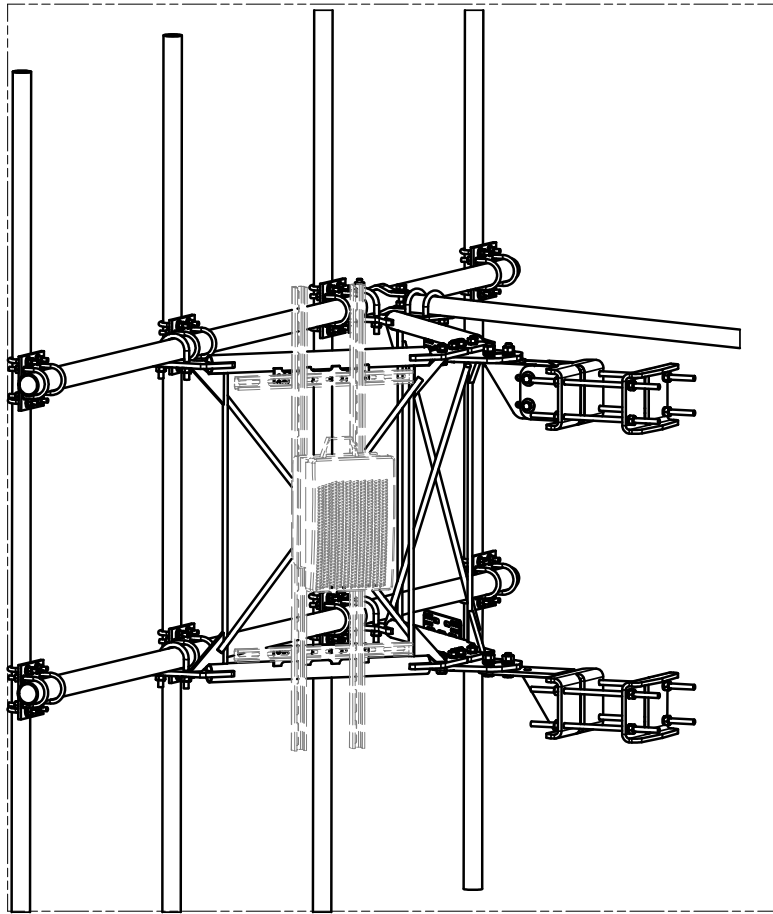


Locations:
 New York, NY
 Atlanta, GA
 Los Angeles, CA
 Plymouth, IN
 Salem, OR
 Dallas, TX

Engineering Support Team:
 1-888-753-7446

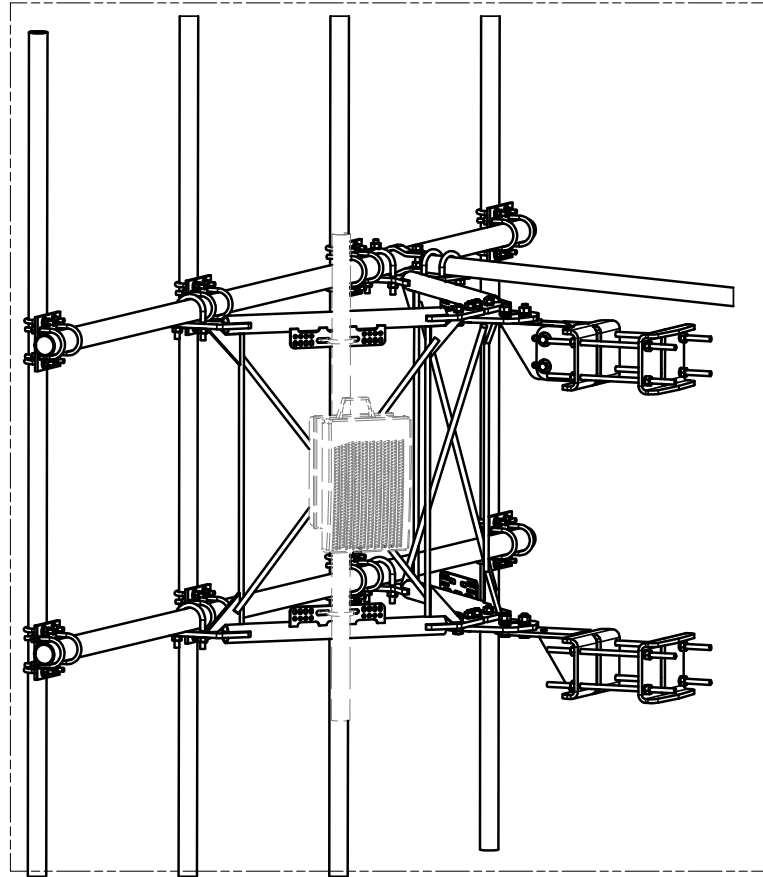
PART NO. VFA12-H10-2120	PAGE 3 OF 4
DWG. NO. VFA12-H10-2120	

A	UPDATED BCAM VERSION 1 TO BCAM VERSION 2	CEK	7/2/2018
REV	DESCRIPTION OF REVISIONS	CPD	BY
	REVISION HISTORY		DATE



UNISTRUT AND HARDWARE
SOLD SEPARATELY.

REQUIRES 3/8" HARDWARE



EQUIPMENT PIPE AND HARDWARE
SOLD SEPARATELY.

REQUIRES 1/2" HARDWARE
AND 2-3/8" TO 4-1/2" O.D. PIPE

TOLERANCE NOTES

TOLERANCES ON DIMENSIONS, UNLESS OTHERWISE NOTED ARE:
 SAWED, SHEARED AND GAS CUT EDGES ($\pm 0.030"$)
 DRILLED AND GAS CUT HOLES ($\pm 0.030"$) - NO CONING OF HOLES
 LASER CUT EDGES AND HOLES ($\pm 0.010"$) - NO CONING OF HOLES
 BENDS ARE $\pm 1/2$ DEGREE
 ALL OTHER MACHINING ($\pm 0.030"$)
 ALL OTHER ASSEMBLY ($\pm 0.060"$)

PROPRIETARY NOTE:
 THE DATA AND TECHNIQUES CONTAINED IN THIS DRAWING ARE PROPRIETARY INFORMATION OF VALMONT
 INDUSTRIES AND CONSIDERED A TRADE SECRET. ANY USE OR DISCLOSURE WITHOUT THE CONSENT OF
 VALMONT INDUSTRIES IS STRICTLY PROHIBITED.

DESCRIPTION 12' 6" HEAVY DUTY
 V-FRAME ASSEMBLY
 W/ 1 STIFF ARM &
 MOUNT PIPES

CPD NO. SP1	DRAWN BY CSL	7/3/2017	ENG. APPROVAL
CLASS 87	SUB 02	DRAWING USAGE CUSTOMER	CHECKED BY BMC
		5/3/2018	



Engineering
 Support Team:
 1-888-753-7446

Locations:
 New York, NY
 Atlanta, GA
 Los Angeles, CA
 Plymouth, IN
 Salem, OR
 Dallas, TX

PART NO.	VFA12-H10-2120
DWG. NO.	VFA12-H10-2120

A	UPDATED BCAM VERSION 1 TO BCAM VERSION 2	CEK	7/2/2018
REV	DESCRIPTION OF REVISIONS	CPD	BY
REVISION HISTORY			