

PARTS LIST						
ITEM	QTY	PART NO.	PART DESCRIPTION	LENGTH	UNIT WT.	NET WT.
1	6	X-LWRM	RING MOUNT WELDMENT		68.81	412.85
2	6	X-RMBP	RING MOUNT BENT PLATE CONNECTION	15 1/2 in	17.02	102.13
3	6	X-SDPP	PIVOT PLATE	11 1/16 in	9.09	54.54
4	6	X-VFASD	SUPPORT ARM FOR STANDARD DUTY V-FRAME ASSEMBLY		45.34	272.06
5	24	SCX1	CROSSOVER PLATE 2-3/8" X 2-3/8"	6 in	3.71	89.00
6	3	P284	2-3/8" X 84" SCH 40 GALVANIZED PIPE	84 in	26.91	80.74
7	12	P2120	2-3/8" x 120" (2" SCH. 40) GALVANIZED PIPE	120 in	38.81	465.74
8	6	P2150	2-3/8" O.D. X 150" SCH 40 GALVANIZED PIPE	150 in	45.77	274.61
9	6	X-127594	FLAT DISK CLAMP PLATE 4" CENTERS (GALV.)		2.51	15.04
10	12	X-100064	CLAMP (4" V-CLAMP) GALVANIZED		0.92	11.06
11	12	A34214	3/4"-10 X 2-1/4" A325 BOLT	2 1/4 in	0.47	5.68
12	18	G34FW	3/4" HDG USS FLATWASHER		0.06	1.06
13	12	G34LW	3/4" HDG LOCKWASHER		0.04	0.51
14	12	G34NUT	3/4" HDG HEAVY 2H HEX NUT		0.21	2.55
15	18	G58R-48	5/8" x 48" THREADED ROD (HDG.)		4.18	75.27
16	24	A582112	5/8" x 2-1/2" HDG A325 HEX BOLT	2 1/2 in	0.33	8.02
17	60	G58LW	5/8" HDG LOCKWASHER		0.03	1.57
18	60	G58NUT	5/8" HDG HEAVY 2H HEX NUT		0.13	7.79
19	108	X-UB1212	1/2" X 2-1/2" X 4-1/2" X 2" GALV. U-BOLT		0.66	71.57
20	24	G1204	1/2" x 4" HDG HEX BOLT GR5 FULL THREAD	4 in	0.27	6.48
21	24	G1202	1/2" x 2" HDG HEX BOLT GR5	2 in	0.18	4.22
22	264	G12FW	1/2" HDG USS FLATWASHER	3/32 in	0.03	9.00
23	264	G12LW	1/2" HDG LOCKWASHER	1/8 in	0.01	3.67
24	264	G12NUT	1/2" HDG HEAVY 2H HEX NUT		0.07	18.91
TOTAL WT. #						1988.63

TOLERANCE NOTES

TOLERANCES ON DIMENSIONS, UNLESS OTHERWISE NOTED ARE:
 SAWED, SHEARED AND GAS CUT EDGES ($\pm 0.030"$)
 DRILLED AND GAS CUT HOLES ($\pm 0.030"$) - NO CONING OF HOLES
 LASER CUT EDGES AND HOLES ($\pm 0.010"$) - NO CONING OF HOLES
 BENDS ARE $\pm 1/2$ DEGREE
 ALL OTHER MACHINING ($\pm 0.030"$)
 ALL OTHER ASSEMBLY ($\pm 0.060"$)

PROPRIETARY NOTE:
 THE DATA AND TECHNIQUES CONTAINED IN THIS DRAWING ARE PROPRIETARY INFORMATION OF VALMONT INDUSTRIES AND CONSIDERED A TRADE SECRET. ANY USE OR DISCLOSURE WITHOUT THE CONSENT OF VALMONT INDUSTRIES IS STRICTLY PROHIBITED.

DESCRIPTION
 THREE SECTORS HEAVY 5 FRAME AND
 MONOPOLE ATTACHMENT HARDWARE
 WITH FOUR MOUNTING PIPES

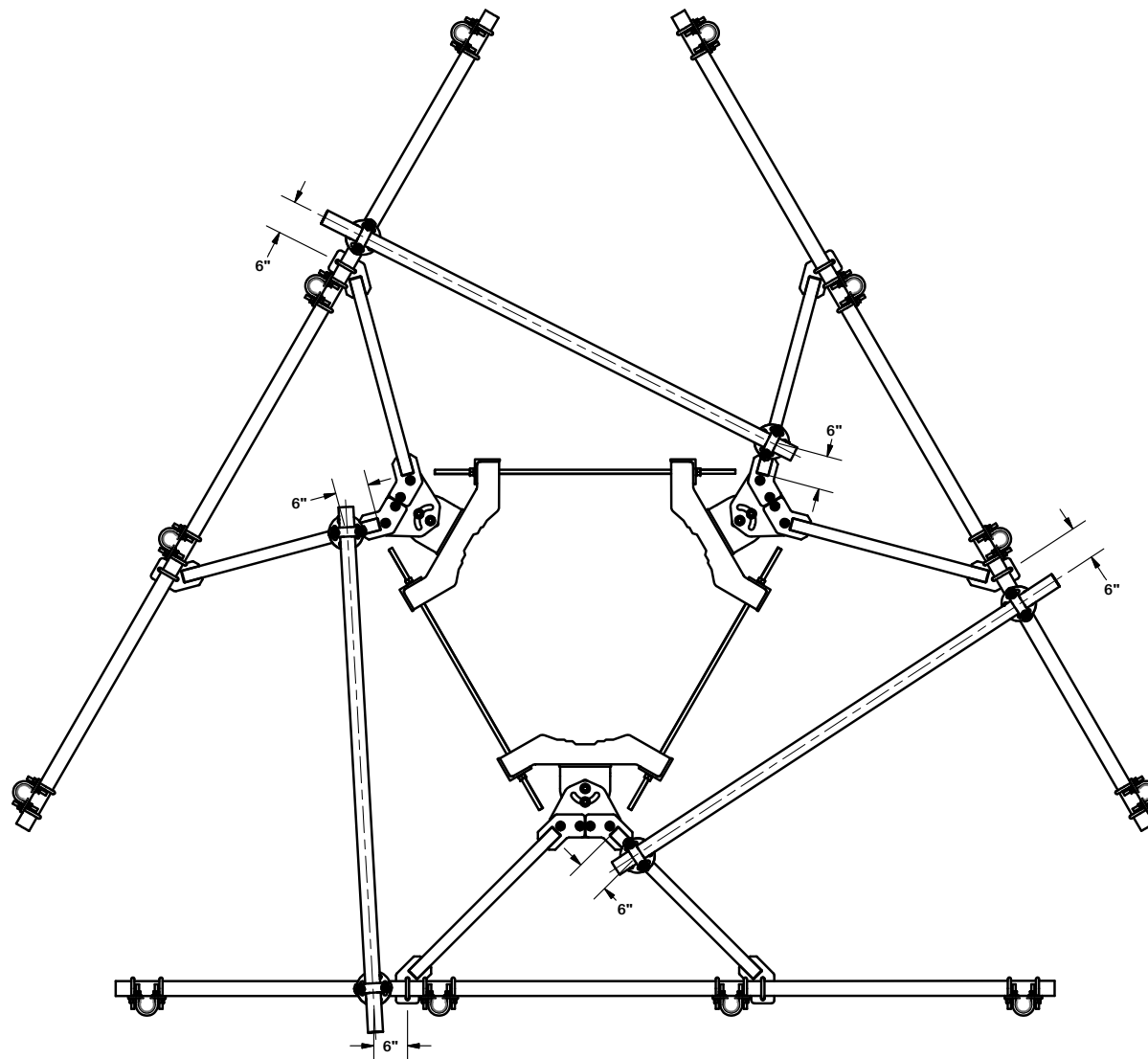


Engineering Support Team:
 1-888-753-7446

Locations:
 New York, NY
 Atlanta, GA
 Los Angeles, CA
 Plymouth, IN
 Salem, OR
 Dallas, TX

CPD NO.	DRAWN BY	ENG. APPROVAL
	CEK 10/25/2018	
CLASS	SUB	DRAWING USAGE
81	02	CUSTOMER
		CHECKED BY
		BMC 10/29/2018

PART NO.	VFA12-M3-H5
DWG. NO.	VFA12-M3-H5



TOLERANCE NOTES

TOLERANCES ON DIMENSIONS, UNLESS OTHERWISE NOTED ARE:
 SAWED, SHEARED AND GAS CUT EDGES ($\pm 0.030"$)
 DRILLED AND GAS CUT HOLES ($\pm 0.030"$) - NO CONING OF HOLES
 LASER CUT EDGES AND HOLES ($\pm 0.010"$) - NO CONING OF HOLES
 BENDS ARE $\pm 1/2$ DEGREE
 ALL OTHER MACHINING ($\pm 0.030"$)
 ALL OTHER ASSEMBLY ($\pm 0.060"$)

PROPRIETARY NOTE:
 THE DATA AND TECHNIQUES CONTAINED IN THIS DRAWING ARE PROPRIETARY INFORMATION OF VALMONT INDUSTRIES AND CONSIDERED A TRADE SECRET. ANY USE OR DISCLOSURE WITHOUT THE CONSENT OF VALMONT INDUSTRIES IS STRICTLY PROHIBITED.

DESCRIPTION
 THREE SECTORS HEAVY 5 FRAME AND
 MONOPOLE ATTACHMENT HARDWARE
 WITH FOUR MOUNTING PIPES

CPD NO.	DRAWN BY	ENG. APPROVAL
	CEK 10/25/2018	
CLASS	DRAWING USAGE	CHECKED BY
81	CUSTOMER	BMC 10/29/2018

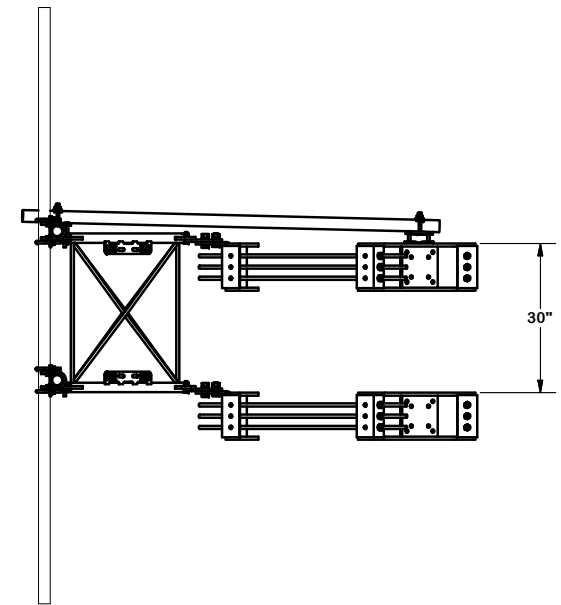
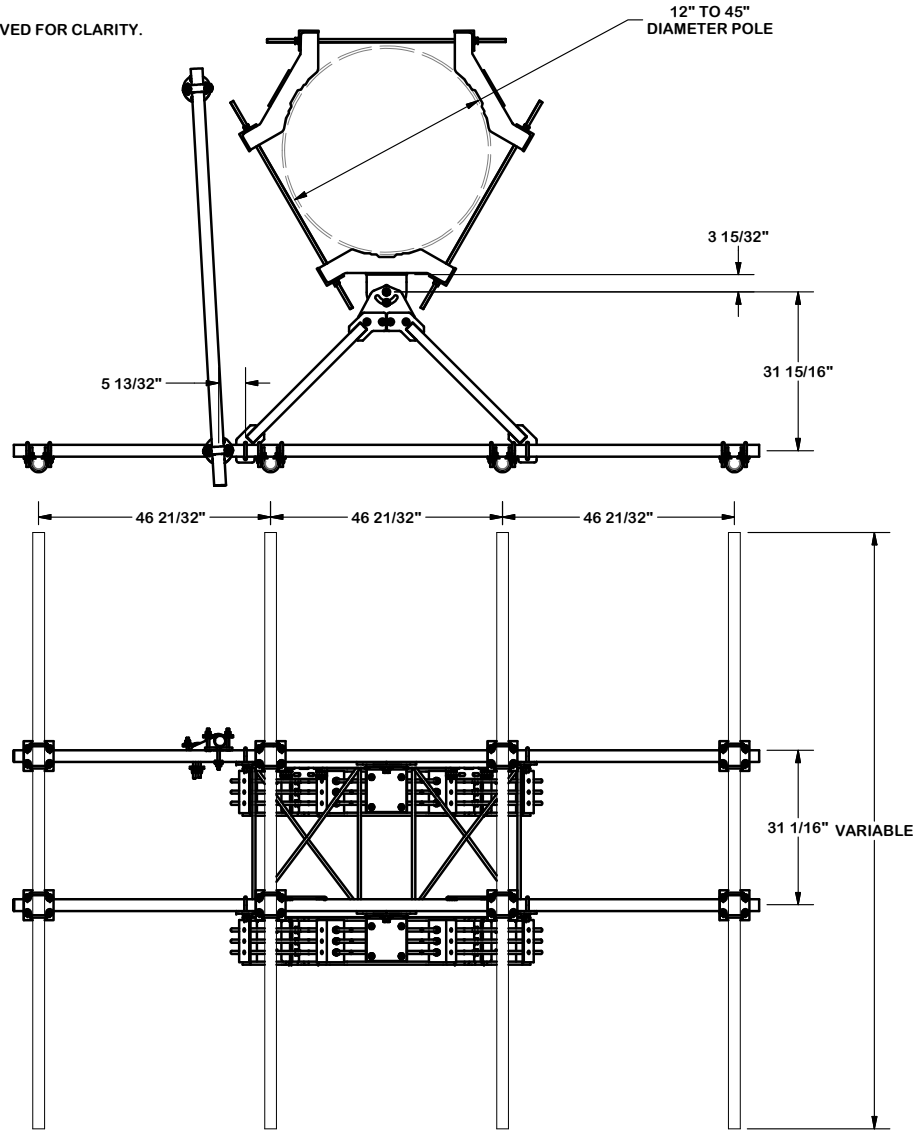
SITE PRO 1
 A valmont COMPANY

Engineering Support Team:
 1-888-753-7446

Locations:
 New York, NY
 Atlanta, GA
 Los Angeles, CA
 Plymouth, IN
 Salem, OR
 Dallas, TX

PART NO.	VFA12-M3-H5
DWG. NO.	VFA12-M3-H5

NOTE:
OTHER SECTORS REMOVED FOR CLARITY.



TOLERANCE NOTES

TOLERANCES ON DIMENSIONS, UNLESS OTHERWISE NOTED ARE:
 SAWED, SHEARED AND GAS CUT EDGES (± 0.030 ")
 DRILLED AND GAS CUT HOLES (± 0.030 ") - NO CONING OF HOLES
 LASER CUT EDGES AND HOLES (± 0.010 ") - NO CONING OF HOLES
 BENDS ARE $\pm 1/2$ DEGREE
 ALL OTHER MACHINING (± 0.030 ")
 ALL OTHER ASSEMBLY (± 0.060 ")

PROPRIETARY NOTE:
 THE DATA AND TECHNIQUES CONTAINED IN THIS DRAWING ARE PROPRIETARY INFORMATION OF VALMONT INDUSTRIES AND CONSIDERED A TRADE SECRET. ANY USE OR DISCLOSURE WITHOUT THE CONSENT OF VALMONT INDUSTRIES IS STRICTLY PROHIBITED.

DESCRIPTION
 THREE SECTORS HEAVY 5 FRAME AND
 MONOPOLE ATTACHMENT HARDWARE
 WITH FOUR MOUNTING PIPES

CPD NO.	DRAWN BY CEK 10/25/2018	ENG. APPROVAL
CLASS 81	SUB 02	DRAWING USAGE CUSTOMER
	CHECKED BY BMC 10/29/2018	

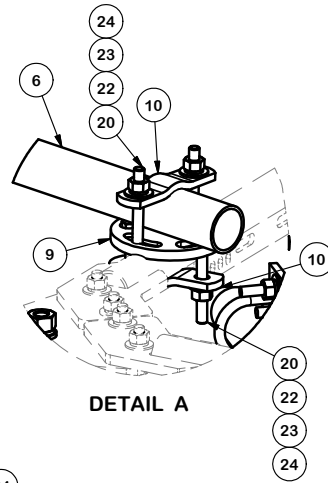
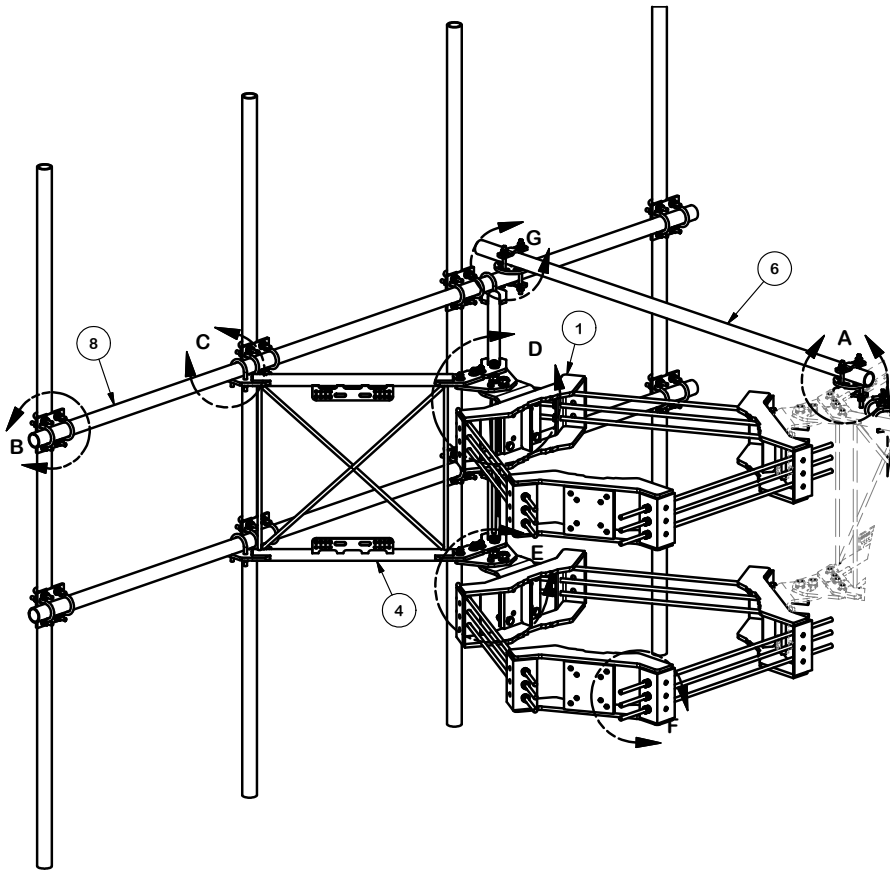


Engineering
 Support Team:
 1-888-753-7446

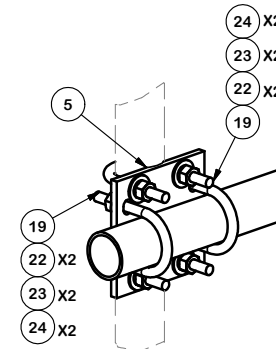
Locations:
 New York, NY
 Atlanta, GA
 Los Angeles, CA
 Plymouth, IN
 Salem, OR
 Dallas, TX

PART NO.	VFA12-M3-H5
DWG. NO.	VFA12-M3-H5

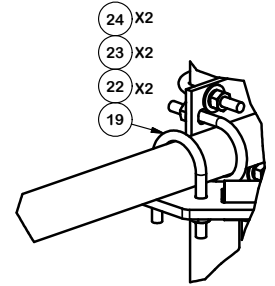
NOTE:
OTHER SECTORS REMOVED FOR CLARITY.



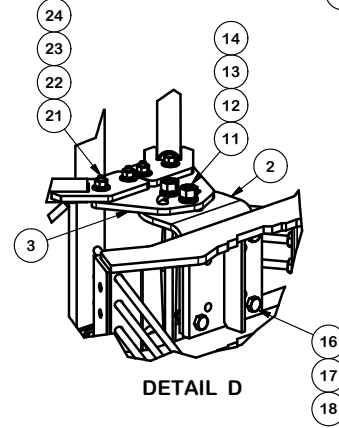
DETAIL A



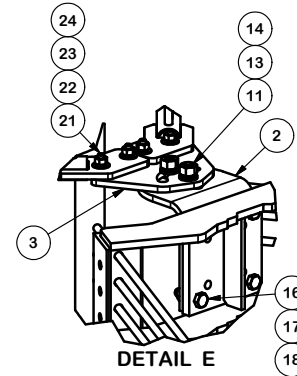
DETAIL B



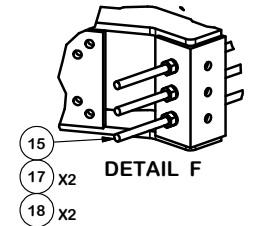
DETAIL C



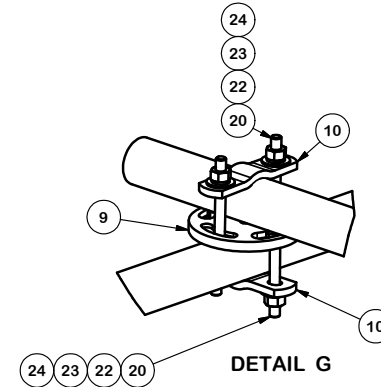
DETAIL D



DETAIL E



DETAIL F



DETAIL G

TOLERANCE NOTES

TOLERANCES ON DIMENSIONS, UNLESS OTHERWISE NOTED ARE:
 SAWED, SHEARED AND GAS CUT EDGES ($\pm 0.030"$)
 DRILLED AND GAS CUT HOLES ($\pm 0.030"$) - NO CONING OF HOLES
 LASER CUT EDGES AND HOLES ($\pm 0.010"$) - NO CONING OF HOLES
 BENDS ARE $\pm 1/2$ DEGREE
 ALL OTHER MACHINING ($\pm 0.030"$)
 ALL OTHER ASSEMBLY ($\pm 0.060"$)

PROPRIETARY NOTE:
 THE DATA AND TECHNIQUES CONTAINED IN THIS DRAWING ARE PROPRIETARY INFORMATION OF VALMONT INDUSTRIES AND CONSIDERED A TRADE SECRET. ANY USE OR DISCLOSURE WITHOUT THE CONSENT OF VALMONT INDUSTRIES IS STRICTLY PROHIBITED.

DESCRIPTION
 THREE SECTORS HEAVY 5 FRAME AND
 MONOPOLE ATTACHMENT HARDWARE
 WITH FOUR MOUNTING PIPES

CPD NO.	DRAWN BY CEK 10/25/2018	ENG. APPROVAL
CLASS 81	SUB 02	DRAWING USAGE CUSTOMER
	CHECKED BY BMC 10/29/2018	

SITE PRO 1
 Engineering Support Team:
 1-888-753-7446

Locations:
 New York, NY
 Atlanta, GA
 Los Angeles, CA
 Plymouth, IN
 Salem, OR
 Dallas, TX

A valmont COMPANY

PART NO.	VFA12-M3-H5
DWG. NO.	VFA12-M3-H5