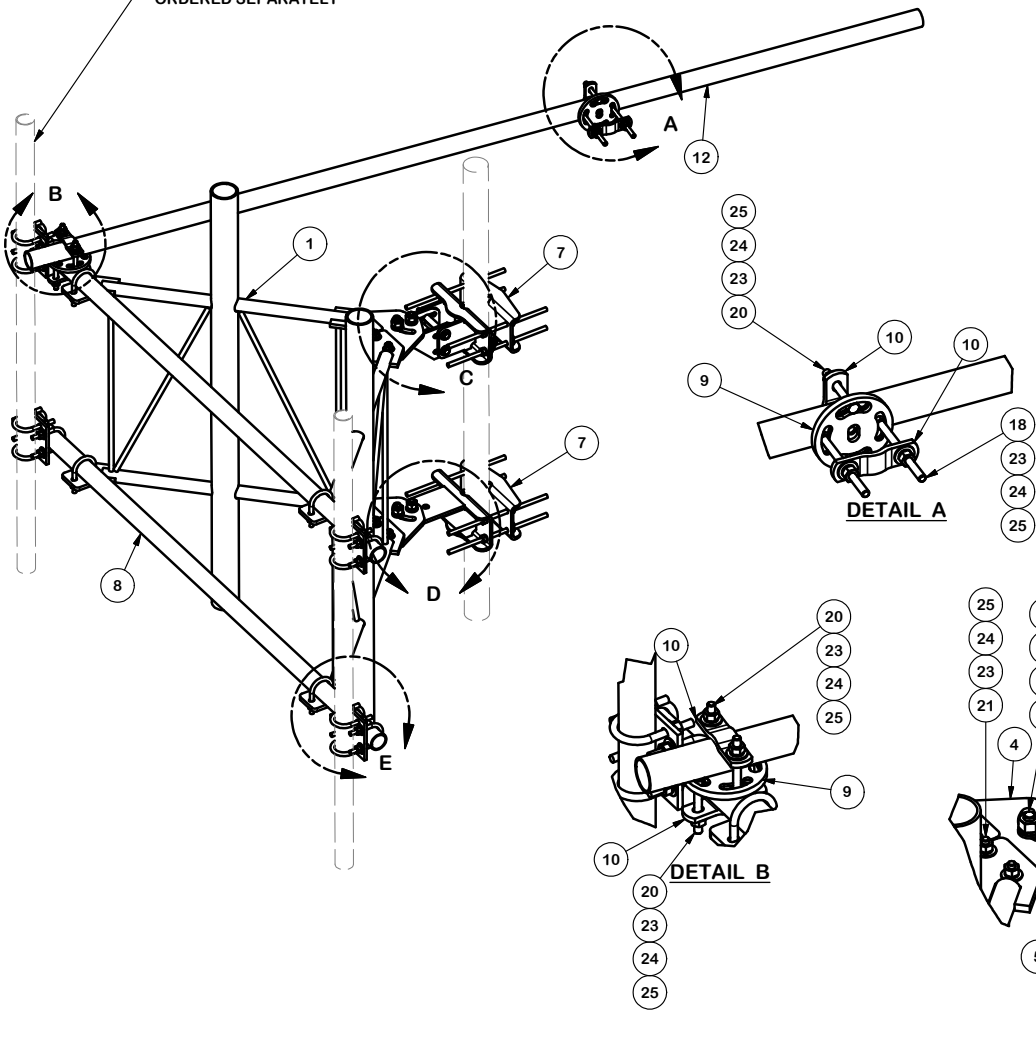


ANTENNA MOUNTING PIPES
ORDERED SEPARATELY



DETAIL A

DETAIL B

DETAIL C

DETAIL D

DETAIL E

TOLERANCE NOTES

TOLERANCES ON DIMENSIONS, UNLESS OTHERWISE NOTED ARE:
 SAWED, SHEARED AND GAS CUT EDGES ($\pm 0.030"$)
 DRILLED AND GAS CUT HOLES ($\pm 0.030"$) - NO CONING OF HOLES
 LASER CUT EDGES AND HOLES ($\pm 0.010"$) - NO CONING OF HOLES
 BENDS ARE $\pm 1/2$ DEGREE
 ALL OTHER MACHINING ($\pm 0.030"$)
 ALL OTHER ASSEMBLY ($\pm 0.060"$)

PROPRIETARY NOTE:
 THE DATA AND TECHNIQUES CONTAINED IN THIS DRAWING ARE PROPRIETARY INFORMATION OF VALMONT INDUSTRIES AND CONSIDERED A TRADE SECRET. ANY USE OR DISCLOSURE WITHOUT THE CONSENT OF VALMONT INDUSTRIES IS STRICTLY PROHIBITED.

DESCRIPTION
 6' V-FRAME ASSEMBLY W/ STIFF ARM
 AND RRU MOUNTING PIPE

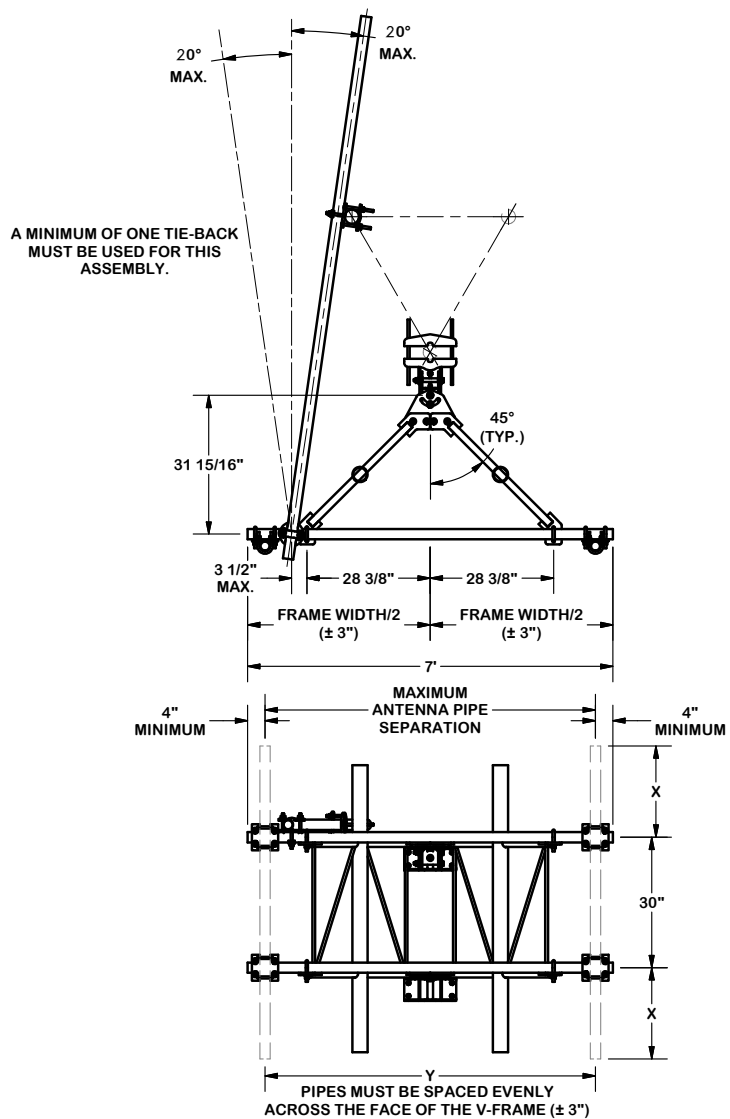
SITE PRO 1
 Engineering Support Team:
 1-888-753-7446

Locations:
 New York, NY
 Atlanta, GA
 Los Angeles, CA
 Plymouth, IN
 Salem, OR
 Dallas, TX

REV	DESCRIPTION OF REVISIONS	CPD	BY	DATE
b	UPDATED BCAM VERSION 1 TO BCAM VERSION 2		CEK	8/22/2018
A	CHANGED LEG CONNECTION HARDWARE		CEK	6/9/2017

CPD NO.	DRAWN BY	ENG. APPROVAL
10142	CEK 2/26/2015	
CLASS	SUB	DRAWING USAGE
81	01	CUSTOMER
CLASS	SUB	DRAWING USAGE
81	01	CUSTOMER

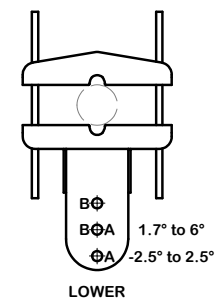
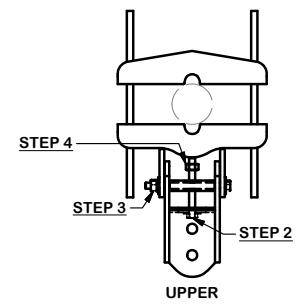
PART NO.	DWG. NO.
VFA6-RRU	VFA6-RRU



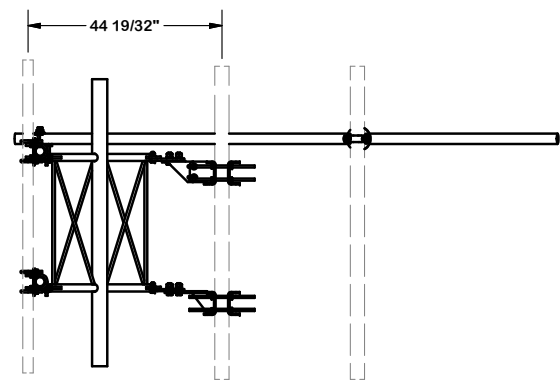
A MINIMUM OF ONE TIE-BACK MUST BE USED FOR THIS ASSEMBLY.

ANGLE CALIBRATING PROCEDURE:

1. MEASURE TOWER TAPER AND PICK LOWER BRACKET HOLE:
 - HOLE A = -2.5° TO 2.5°
 - HOLE B = 1.7° TO 6°
2. USE CALIBRATING BOLT TO ADJUST FRAME TO DESIRED TAPER
3. TORQUE LOCKING BOLTS TO 50 ft.-lbs.
4. ADVANCE LOCKING NUT TO POSITIONING PLATE, THEN TIGHTEN.



CENTER ANTENNA PIPE VERTICALLY ON V-FRAME FACE.



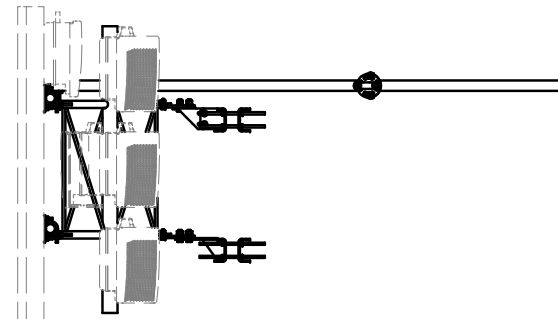
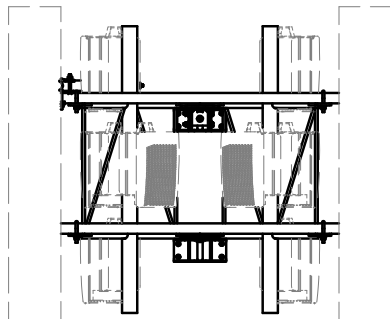
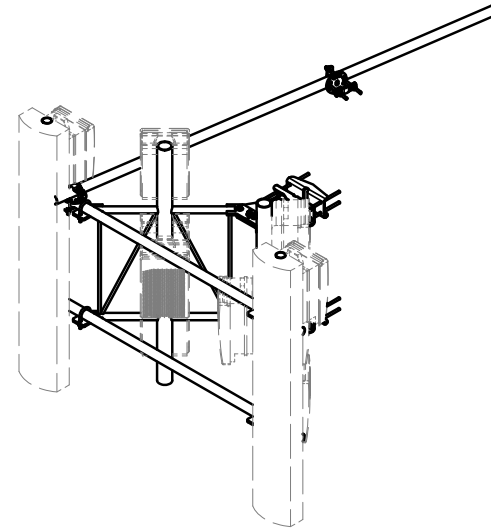
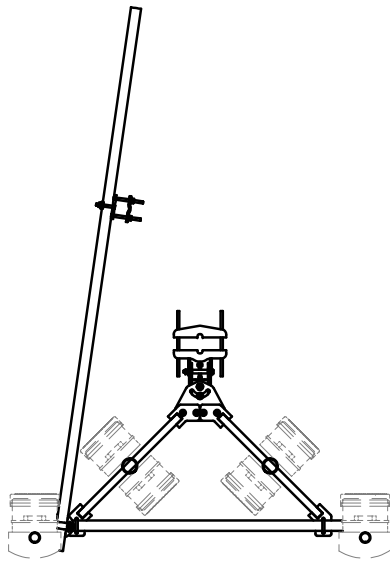
REV	DESCRIPTION OF REVISIONS	CPD	BY	DATE
b	UPDATED BCAM VERSION 1 TO BCAM VERSION 2		CEK	8/22/2018
A	CHANGED LEG CONNECTION HARDWARE		CEK	6/9/2017
REVISION HISTORY				

TOLERANCE NOTES
 TOLERANCES ON DIMENSIONS, UNLESS OTHERWISE NOTED ARE:
 SAWED, SHEARED AND GAS CUT EDGES (± 0.030)
 DRILLED AND GAS CUT HOLES (± 0.030) - NO CONING OF HOLES
 LASER CUT EDGES AND HOLES (± 0.010) - NO CONING OF HOLES
 BENDS ARE $\pm 1/2$ DEGREE
 ALL OTHER MACHINING (± 0.030)
 ALL OTHER ASSEMBLY (± 0.060)

PROPRIETARY NOTE:
 THE DATA AND TECHNIQUES CONTAINED IN THIS DRAWING ARE PROPRIETARY INFORMATION OF VALMONT INDUSTRIES AND CONSIDERED A TRADE SECRET. ANY USE OR DISCLOSURE WITHOUT THE CONSENT OF VALMONT INDUSTRIES IS STRICTLY PROHIBITED.

DESCRIPTION		DRAWN BY		ENG. APPROVAL	
6' V-FRAME ASSEMBLY W/ STIFF ARM AND RRU MOUNTING PIPE		CPD NO. 10142	CEK 2/26/2015		
CLASS 81	SUB 01	DRAWING USAGE CUSTOMER	CHECKED BY BMC	8/22/2018	

 A valmont COMPANY	Locations: New York, NY Atlanta, GA Los Angeles, CA Plymouth, IN Salem, OR Dallas, TX	
	Engineering Support Team: 1-888-753-7446	
PART NO.	VFA6-RRU	PAGE 2 OF 3
DWG. NO.	VFA6-RRU	



TOLERANCE NOTES

**TOLERANCES ON DIMENSIONS, UNLESS OTHERWISE NOTED ARE:
 SAWED, SHEARED AND GAS CUT EDGES ($\pm 0.030"$)
 DRILLED AND GAS CUT HOLES ($\pm 0.030"$) - NO CONING OF HOLES
 LASER CUT EDGES AND HOLES ($\pm 0.010"$) - NO CONING OF HOLES
 BENDS ARE $\pm 1/2$ DEGREE
 ALL OTHER MACHINING ($\pm 0.030"$)
 ALL OTHER ASSEMBLY ($\pm 0.060"$)**

**PROPRIETARY NOTE:
 THE DATA AND TECHNIQUES CONTAINED IN THIS DRAWING ARE PROPRIETARY INFORMATION OF VALMONT
 INDUSTRIES AND CONSIDERED A TRADE SECRET. ANY USE OR DISCLOSURE WITHOUT THE CONSENT OF
 VALMONT INDUSTRIES IS STRICTLY PROHIBITED.**

DESCRIPTION
**6' V-FRAME ASSEMBLY W/ STIFF ARM
 AND RRU MOUNTING PIPE**



Engineering
 Support Team:
 1-888-753-7446

Locations:
 New York, NY
 Atlanta, GA
 Los Angeles, CA
 Plymouth, IN
 Salem, OR
 Dallas, TX

b	UPDATED BCAM VERSION 1 TO BCAM VERSION 2	CEK	8/22/2018
A	CHANGED LEG CONNECTION HARDWARE	CEK	6/9/2017
REV	DESCRIPTION OF REVISIONS	CPD	BY
REVISION HISTORY			

CPD NO.	10142	DRAWN BY	CEK 2/26/2015	ENG. APPROVAL
CLASS	81	SUB	01	DRAWING USAGE
			CUSTOMER	CHECKED BY
				BMC 8/22/2018

PART NO.	VFA6-RRU	PAGE	3 OF 3
DWG. NO.	VFA6-RRU		