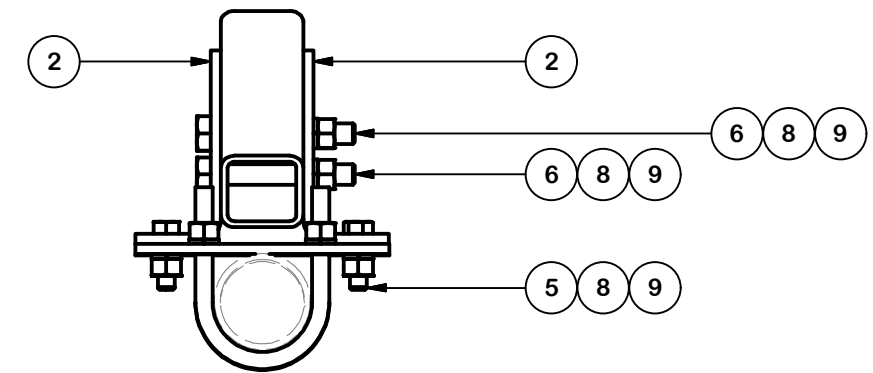
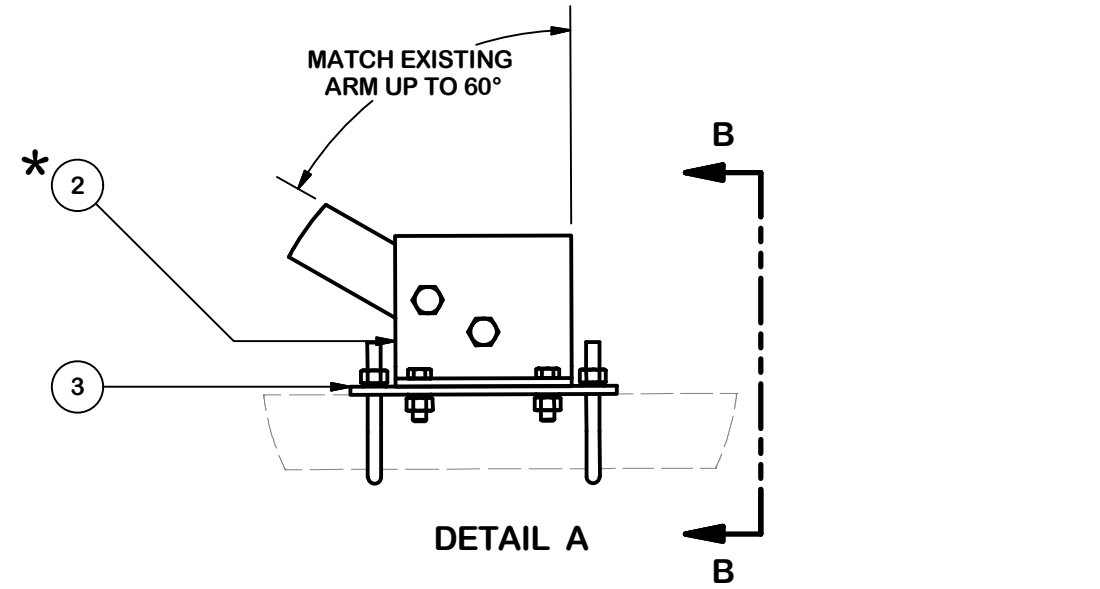
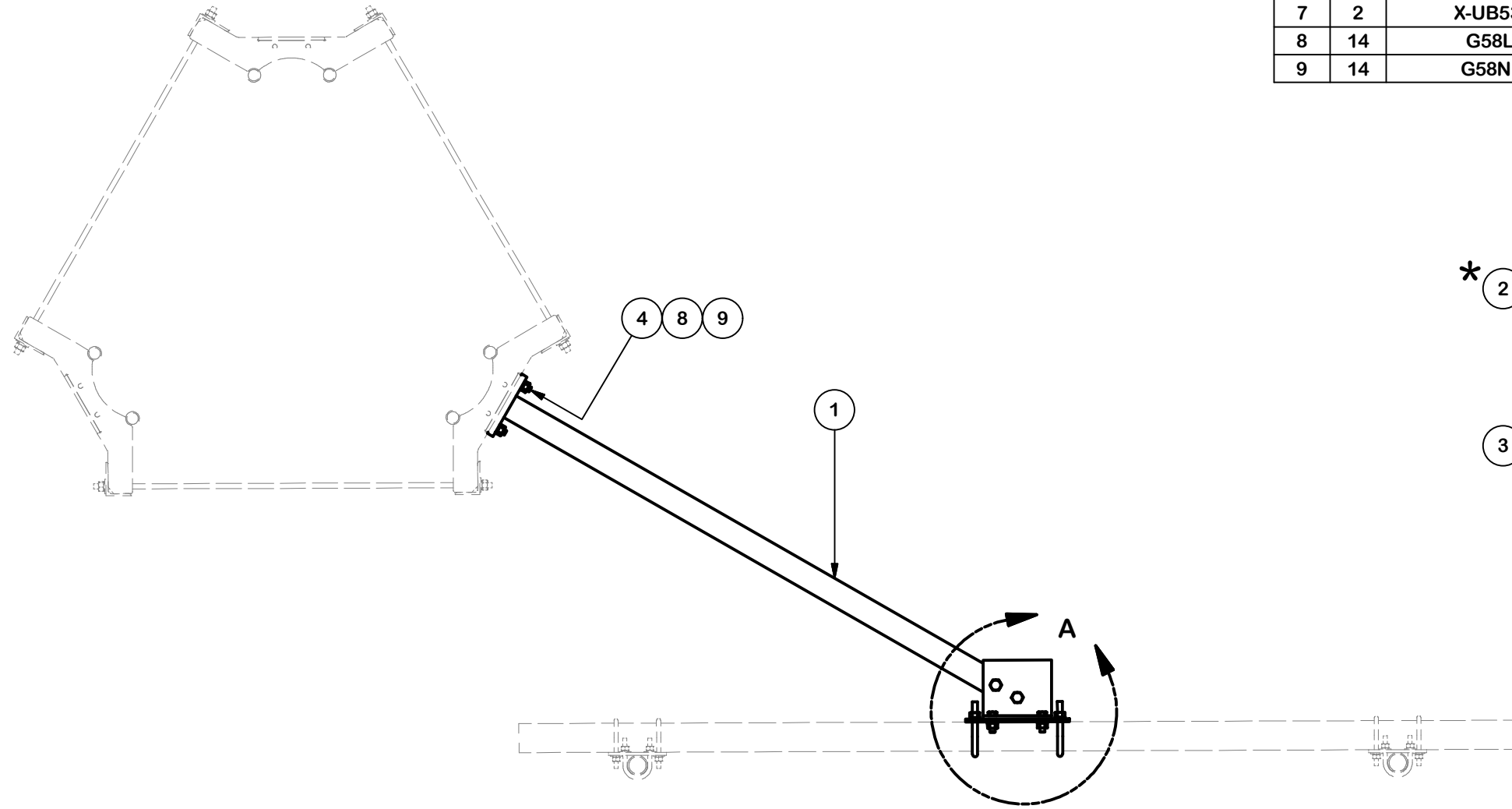


**\* FIELD LOCATE AND DRILL HOLES FOR RO-TAW-6  
AND SECOND HOLE IN BP825-94375**



VIEW B-B

PARTS LIST						
ITEM	QTY	PART NO.	PART DESCRIPTION	LENGTH	UNIT WT.	NET WT.
1	1	RO-TAW-6	T-ARM WELDMENT		68.89	68.89
2	2	BP825-94375	BENT PLATE	8 1/4 in	8.65	17.29
3	1	PL375-92512025	CROSSOVER PLATE	9 1/4 in	12.72	12.72
4	4	A582114	5/8" x 2-1/4" HDG A325 HEX BOLT	2 1/4 in	0.31	1.25
5	4	A5802	5/8" x 2" HDG A325 HEX BOLT		0.27	1.09
6	2	A34514	3/4" UNC HEX BOLT (A325)	5 1/4 in	0.85	1.70
7	2	X-UB5358	5/8" X 3-5/8" X 6" X 3" U-BOLT (HDG.)		1.31	2.62
8	14	G58LW	5/8" HDG LOCKWASHER		0.03	0.37
9	14	G58NUT	5/8" HDG HEAVY 2H HEX NUT		0.13	1.82
					TOTAL WT. #	107.74

Valmont Site Pro 1  
Lori.Espinosa@valmont.com  
(631) 715-3045  
www.sitepro1.com

**TOLERANCE NOTES**

TOLERANCES ON DIMENSIONS, UNLESS OTHERWISE NOTED ARE:  
SAWED, SHEARED AND GAS CUT EDGES ( $\pm 0.030"$ )  
DRILLED AND GAS CUT HOLES ( $\pm 0.030"$ ) - NO CONING OF HOLES  
LASER CUT EDGES AND HOLES ( $\pm 0.010"$ ) - NO CONING OF HOLES  
BENDS AND ANGLES ARE  $\pm 1/2$  DEGREE  
ALL OTHER MACHINING ( $\pm 0.030"$ )  
ALL OTHER ASSEMBLY ( $\pm 0.060"$ )

PROPRIETARY NOTE:  
THE DATA AND TECHNIQUES CONTAINED IN THIS DRAWING ARE PROPRIETARY INFORMATION OF VALMONT INDUSTRIES AND CONSIDERED A TRADE SECRET. ANY USE OR DISCLOSURE WITHOUT THE CONSENT OF VALMONT INDUSTRIES IS STRICTLY PROHIBITED.

DESCRIPTION  
**VZW SMART ROTATING T-ARM KIT  
(SINGLE SECTOR)**

CPD NO.	DRAWN BY CSL 3/26/2020	ENG. APPROVAL 5/10/2020
CLASS 87	SUB 02	DRAWING USAGE CUSTOMER
	CHECKED BY BMC 5/10/2020	



Engineering Support Team:  
1-888-753-7446

Locations:  
New York, NY  
Atlanta, GA  
Los Angeles, CA  
Plymouth, IN  
Salem, OR  
Dallas, TX  
Tampa, FL

PART NO. <b>VZWSMART-SFK4</b>
DWG. NO. <b>VZWSMART-SFK4</b>